

City Road, EC1V

£181,250

A beautifully presented shared ownership two-bedroom apartment located on the top floor of a contemporary development. The home features a bright south-west facing reception with expansive views of the London skyline, seamlessly connected to a modern open-plan kitchen with light-toned cabinetry and integrated appliances. The master bedroom includes a built-in wardrobe, while the hallway offers large cupboards for added storage. A generously sized, stylish bathroom completes the interior. Please note, this property is currently part-owned by the Housing Association and is offered at a 25% share. Shared Ownership Criteria: applicants must earn sub £100,000 annually, work in London and own no other properties.

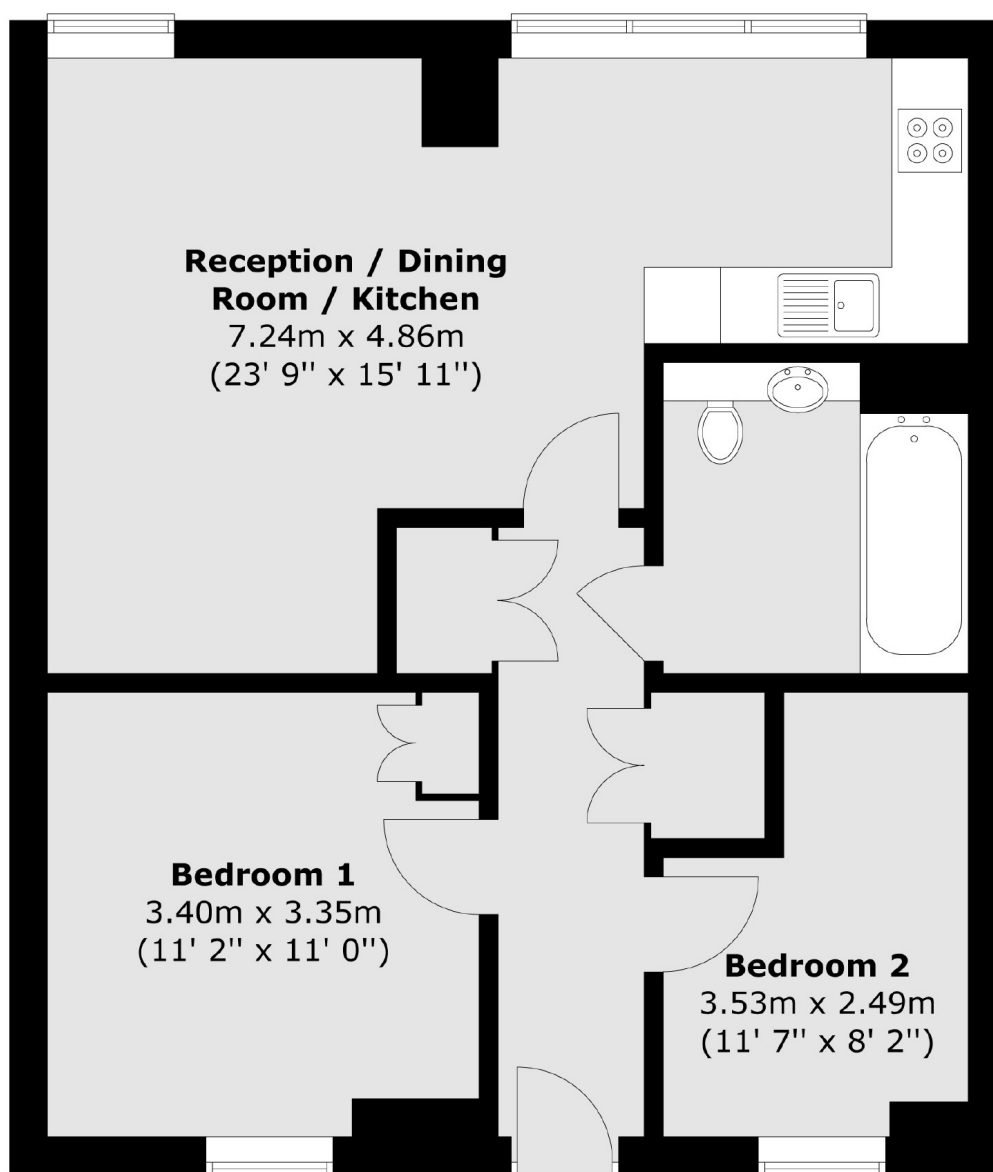
Fable Apartments enjoys a prime location near City Road Basin, just moments from Graham Street Park and within walking distance of both Angel and Old Street stations, with easy access to the heart of The City. Energy efficiency is excellent, thanks to well-insulated walls, high-performance glazing, and a communal heating and hot water system. Residents also benefit from a large bicycle storage facility and exclusive access to an on-site gym, pool and spa.

Features

25% share available
 Rent: £672.33p/m
 Service charge: £376.51 p/m
 Two Bedroom Flat
 Top Floor

City Road, London, EC1V

Seventh Floor



Total area (approx.) : 61.8 sq. m (665 sq. ft)