



## Milner Square, N1

£425,000

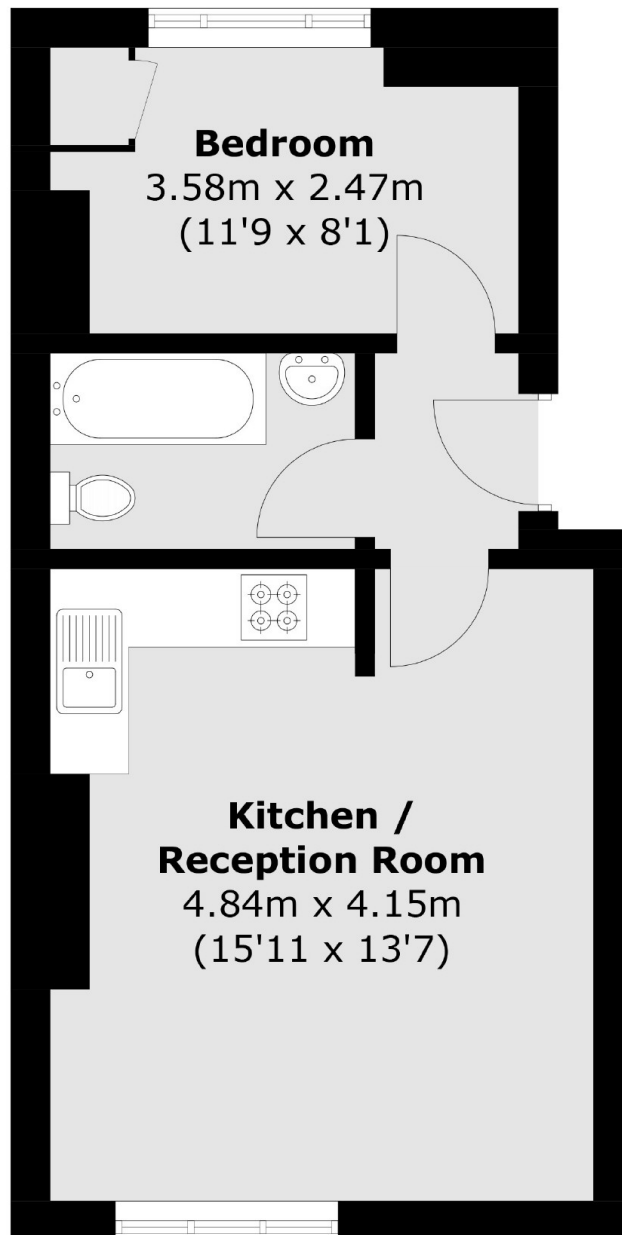
This ground floor one bedroom apartment is located on the highly sought after Milner Square. The property features an open plan kitchen living area, built in storage and access to a communal garden.

Upper Street is home to an plethora of independent cafes, restaurants and bars, with the internationally renowned Almeida Theatre a few minutes walk away. Highbury & Islington Station and Angel Underground are within half a mile offering excellent connections to the city and westend alike.

### Features

- Grade II Listed
- One bedroom
- Open Plan
- Communal Garden

# Milner Square, London, N1



Total area (approx.): 34.5 sq. m (371.3 sq. ft)

## Dexters

Islington  
76 Upper Street  
London  
N1 0NU  
Sales  
020 7483 6373

Energy Rating: C. We aim to make our particulars both accurate and reliable. However they are not guaranteed; nor do they form part of an offer or contract. If you require clarification on any points then please contact us, especially if you're traveling some distance to view. Please note that appliances and heating systems have not been tested and therefore no warranties can be given as to their good working order.

 **RICS** | Regulated  
Estate Agent  
and Letting Agent

[dexters.co.uk](http://dexters.co.uk)