



Mildmay Grove North, N1

£700,000

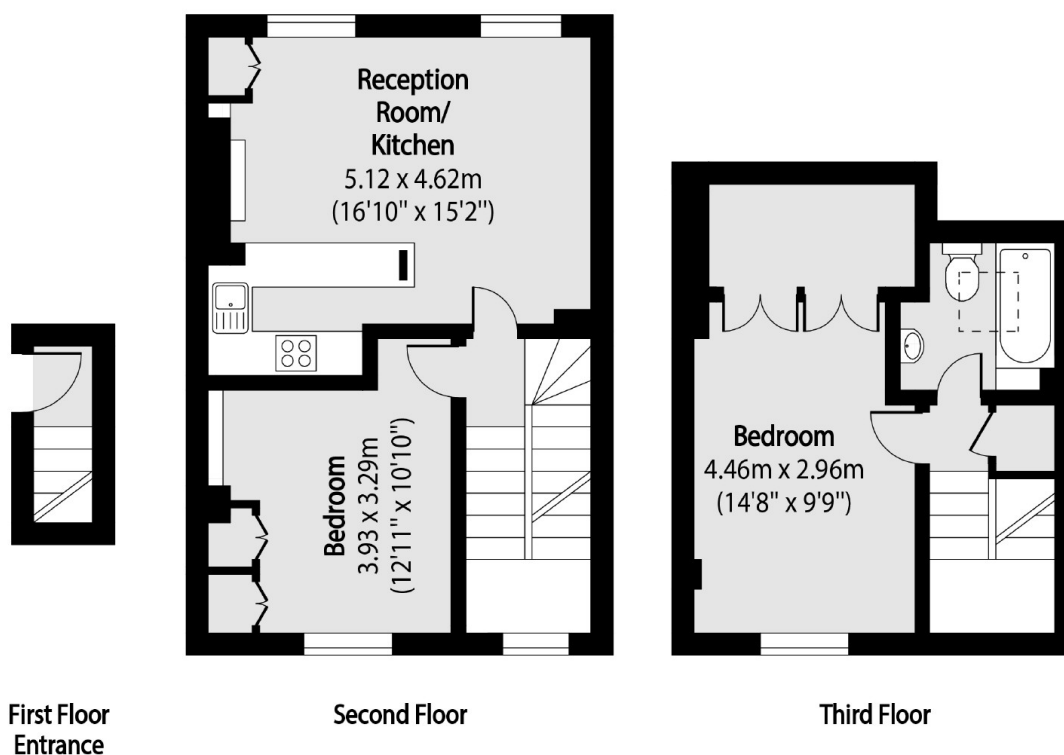
This two bedroom flat is split across the upper floors of a Victorian terrace. Large sash windows in the open plan living area allow the space to be bathed in natural light during the day and provide city views at night. Both bedrooms allow for double beds plus additional storage. This property is being offered chain free.

Located under half a mile to Canonbury Station (Overground) which is just one stop to Highbury and Islington (Victoria line). Alternatively there are many bus routes that run along Mildmay Park into The City. The property is a short walk to the shops, cafes and restaurants by Newington Green.

Features

- Two bedrooms
- Chain free
- Share of Freehold
- Sash windows
- Split level
- Period conversion

Mildmay Grove North, London, N1



Total area (approx): 71.75 sq m (772 sq. ft)

Dexters

Islington
76 Upper Street
London
N1 0NU
Sales
020 7483 6373

Energy Rating: TBC. We aim to make our particulars both accurate and reliable. However they are not guaranteed; nor do they form part of an offer or contract. If you require clarification on any points then please contact us, especially if you're traveling some distance to view. Please note that appliances and heating systems have not been tested and therefore no warranties can be given as to their good working order.

 **RICS** | Regulated
Estate Agent
and Letting Agent

[dexters.co.uk](https://www.dexters.co.uk)