



## Anderson Square, N1

### £650,000

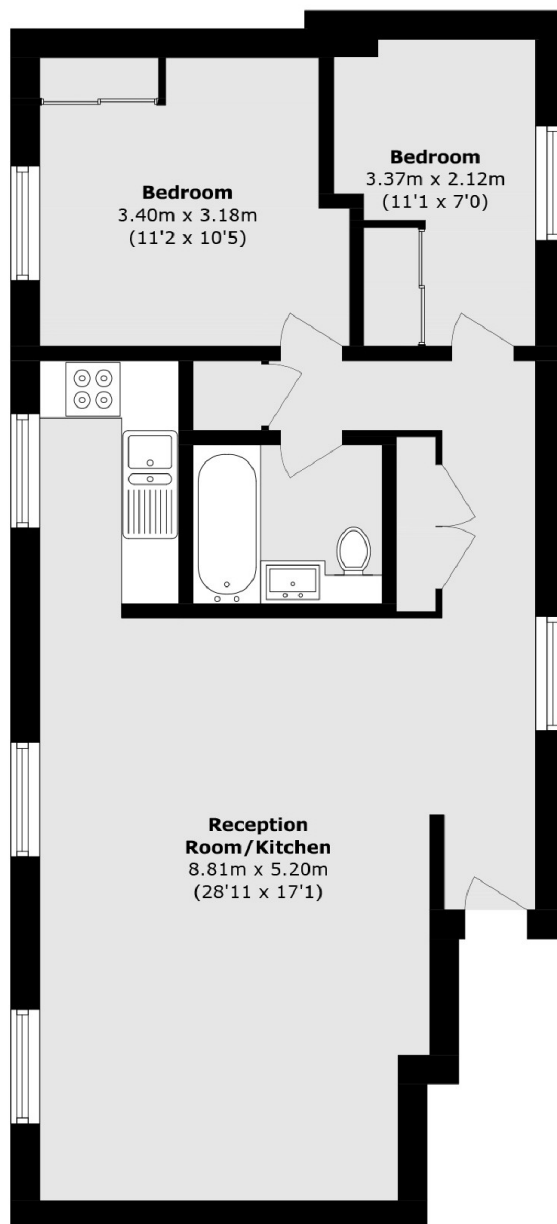
A two bedroom apartment set on the top floor of a gated development in the centre of Angel. The open plan kitchen/living space and the primary bedroom are generously proportioned, and the second is perfect for an office or guest space.

Located in the heart of Angel and tucked away off of Islington's vibrant Upper Street, famous for its array of bars, restaurants and boutique shops. For transport, Angel station (Northern Line) is less than half a mile away, and Essex Road provides links to the City via the Great Northern Line.

### Features

- Chain Free
- Two Bedrooms
- Communal Gardens
- Secured Access
- Top Floor

# Anderson Square, London, N1



Total area (approx.): 58.8 sq. m (632.9 sq. ft)