



## Ellington Street, N7

£2,900 Per calendar month

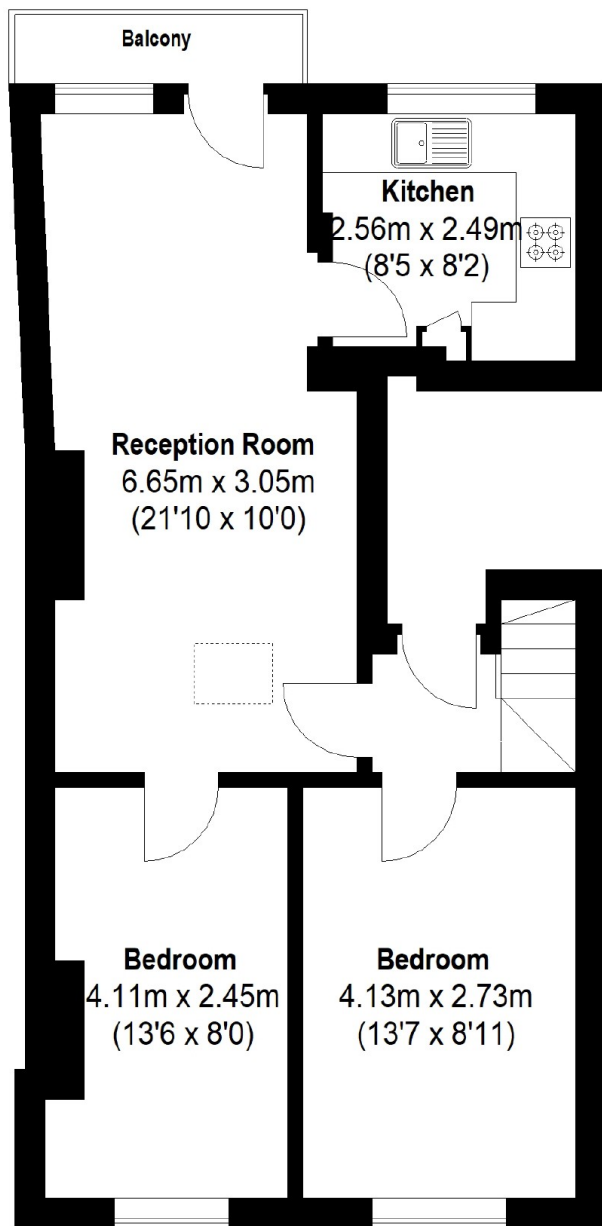
A beautifully presented two bedroom property on Ellington Street. This property has a semi open plan kitchen reception room with wood floors leading to balcony. Spacious master bedroom and a second double bedroom with family bathroom, leading to private rooftop terrace.

Ellington Street is ideally located with the amenities of Upper Street, Highbury and Islington and Holloway Road close by. Residents can enjoy a huge selection of cafe's, pubs, restaurants and shops. Highbury and Islington Station is the closest Station.

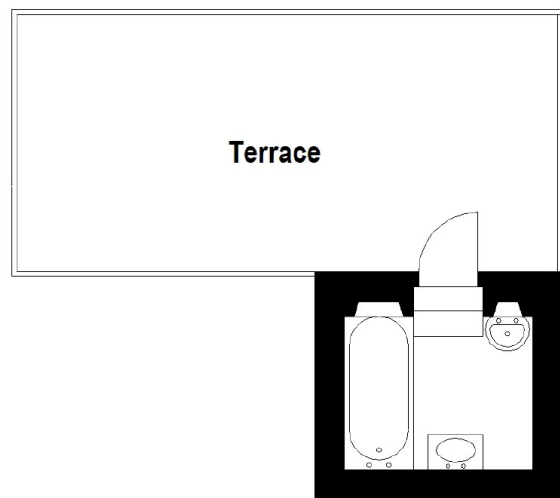
### Features

- Two Bedrooms
- Private Terrace
- Period Features
- Semi Open Plan
- Close to Transport
- Furnished

# Ellington Street, London, N7



**Third Floor**



**Fourth Floor**

Total area (approx.): 51.97 sq. m (559 Sq. ft)

Balcony: 2.26 sq. m (24 Sq. ft)

Terrace: 14.30 sq. m (154 Sq. ft)