



Hertford Road, N1

£610,000

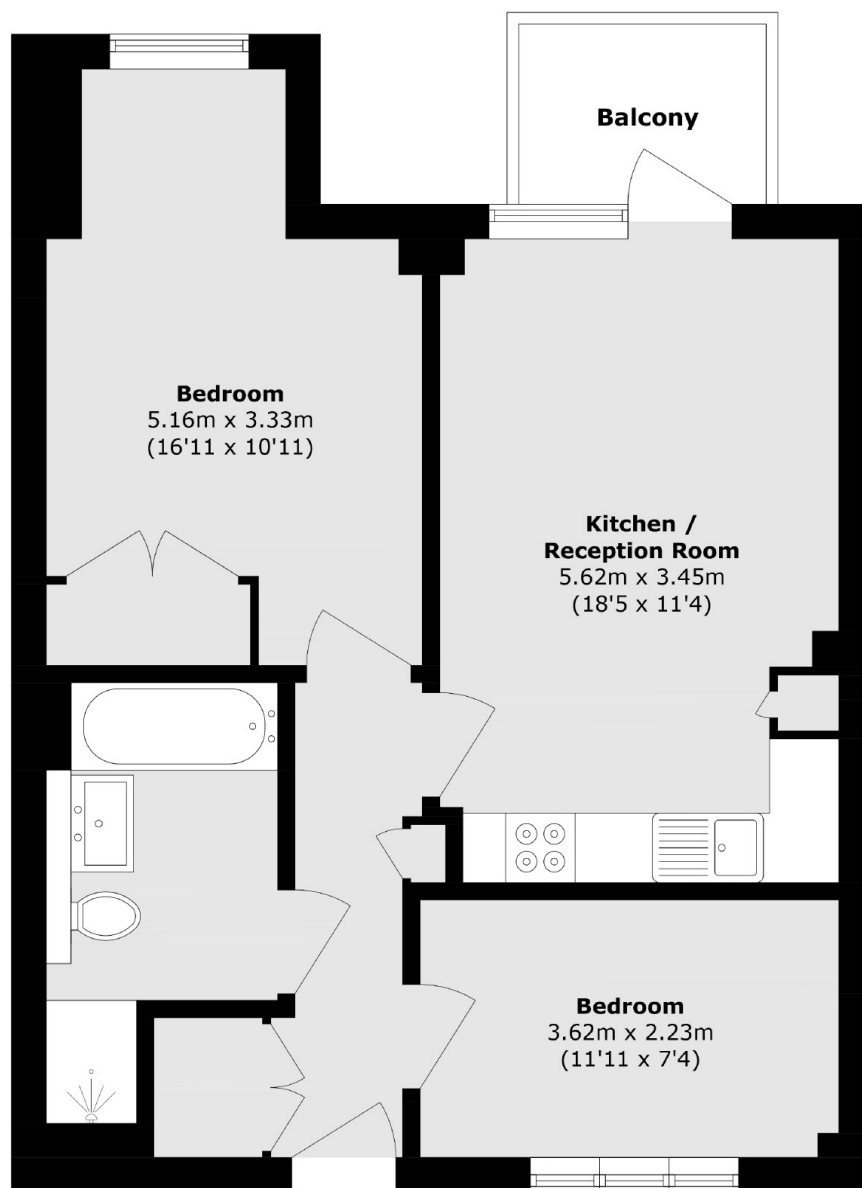
An immaculately presented two bedroom, one bathroom apartment in the waterside gated development of Downham Wharf. This property benefits from a balcony overlooking the Kingsland Basin, offering an idyllic respite to central London living.

Hertford Road is perfectly set for easy access to Shoreditch and the City and is also surrounded by great pubs and eateries found in De Beauvoir alongside further delis and cafes on Southgate Road. Regents Canal is just moments away and offers a scenic route to Victoria Park and Maida Vale whilst access to West and East London can be easily facilitated via the closest stations, Haggerston overground, Dalston Kingsland and Old Street underground.

Features

- Basin Views
- Two Bedrooms
- One Bathroom
- Gated Development
- Open Plan
- Private Balcony

Hertford Road, London, N1



Total area (approx.): 57.5 sq. m (618.9 sq. ft)

Balcony area (approx.): 3.3 sq. m (35.5 sq. ft)