

Pyrland Road, N5

£1,250,000

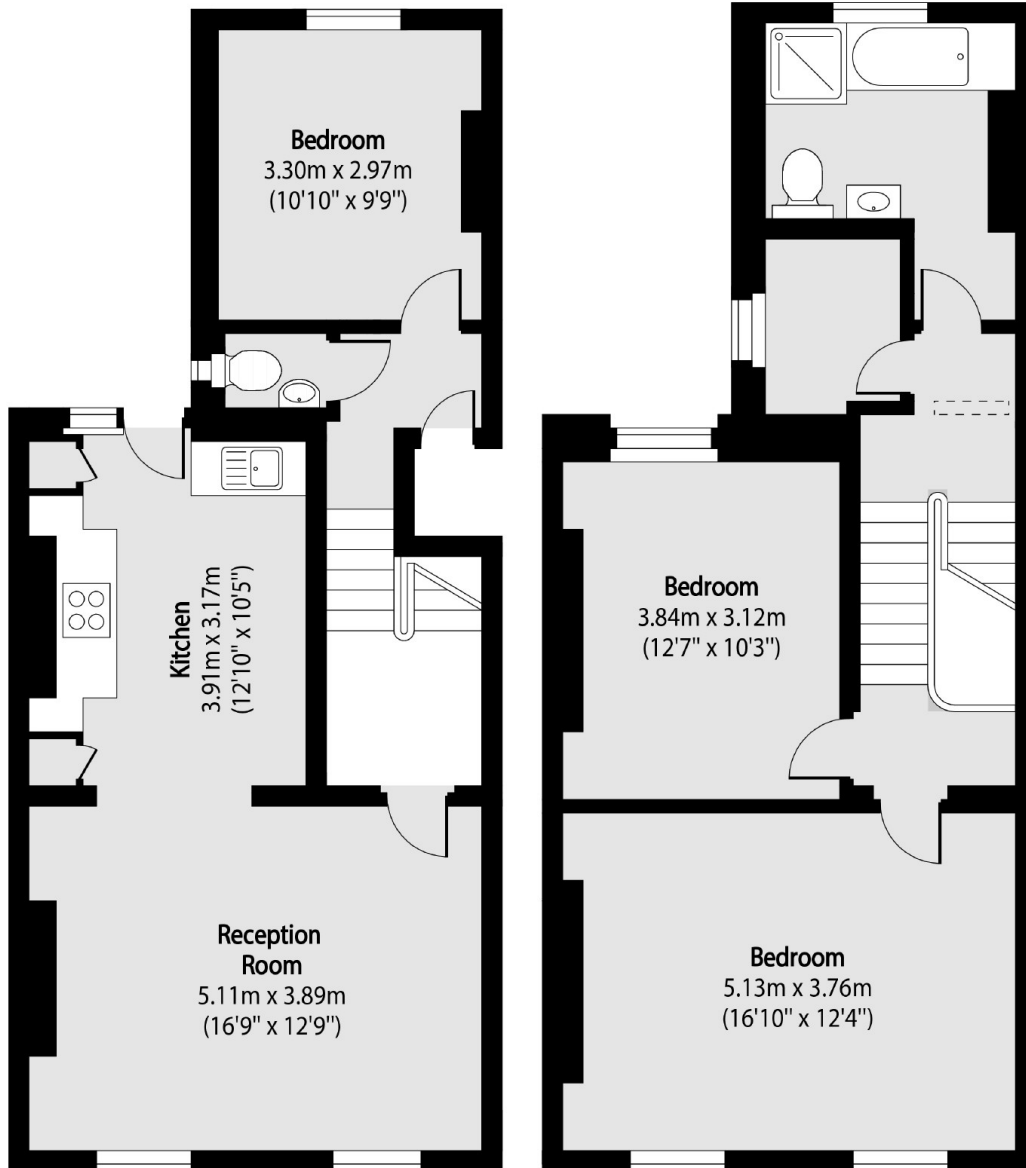
Newly refurbished and immaculately presented throughout, this split level home occupies the top two floors of a Victorian conversion. This substantially sized flat consists of three double bedrooms, separate office and a large, open plan kitchen/reception room. Stairs from the kitchen lead directly out to a shared garden.

Pyrland Road is a residential, tree lined street in a popular Highbury location. Just moments away from the restaurants and cafés of Newington Green and around a quarter mile from Canonbury Station (Overground), this property is ideally located for transport and amenities alike.

Features

- Three Double Bedrooms
- Separate Office
- Shared Garden
- Chain Free
- Newly Refurbished

Pyrland Road,
London, N5



First Floor

Second Floor

Total area (approx): 107.02 sq m (1152 sq. ft)