



Cloudesley Square, N1

£650 Per week

A two bedroom Georgian conversion on one of the most desirable squares in Islington. This modern apartment offers open plan living, two double bedrooms and private outside space.

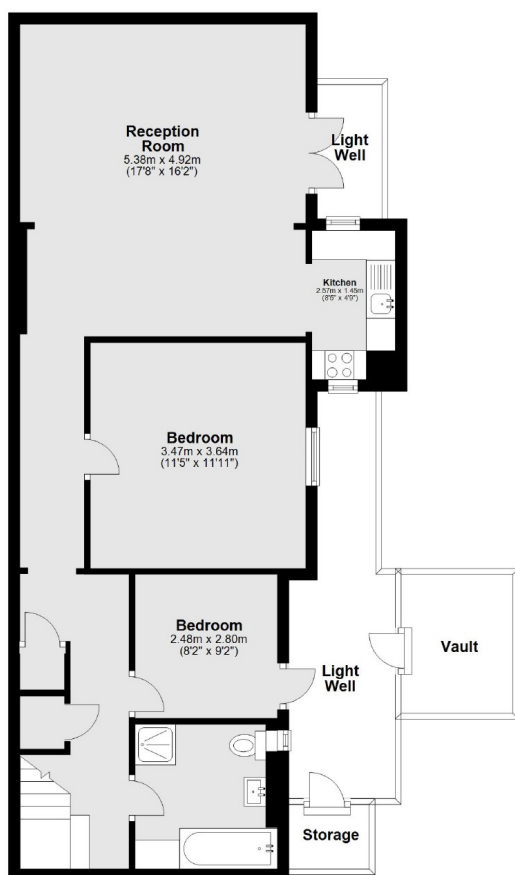
Cloudesley Square offers excellent transport links with both Angel and Highbury & Islington stations within easy reach. Upper Street with its array of boutique shops, restaurants and café's is also just a short walk away.

Features

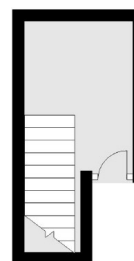
- Period Conversion
- Two Bedrooms
- One Bathroom
- Basement Flat
- Private Terrace
- Vault Storage

Cloudesley Square, London, N1

Lower Ground Floor



Upper Ground Floor



Main area: Approx. 80.3 sq. metres (864.8 sq. feet)

Plus light well, approx. 14.0 sq. metres (150.2 sq. feet)
Plus external storage, approx. 6.2 sq. metres (67.1 sq. feet)

Dexters

Islington
76 Upper Street
London
N1 0NU
Lettings
020 7483 6374

Energy Rating: . We aim to make our particulars both accurate and reliable. However they are not guaranteed; nor do they form part of an offer or contract. If you require clarification on any points then please contact us, especially if you're traveling some distance to view. Please note that appliances and heating systems have not been tested and therefore no warranties can be given as to their good working order.

 **RICS** | Regulated
Estate Agent
and Letting Agent

[dexters.co.uk](https://www.dexters.co.uk)