



Elmore Street, N1

£475,000

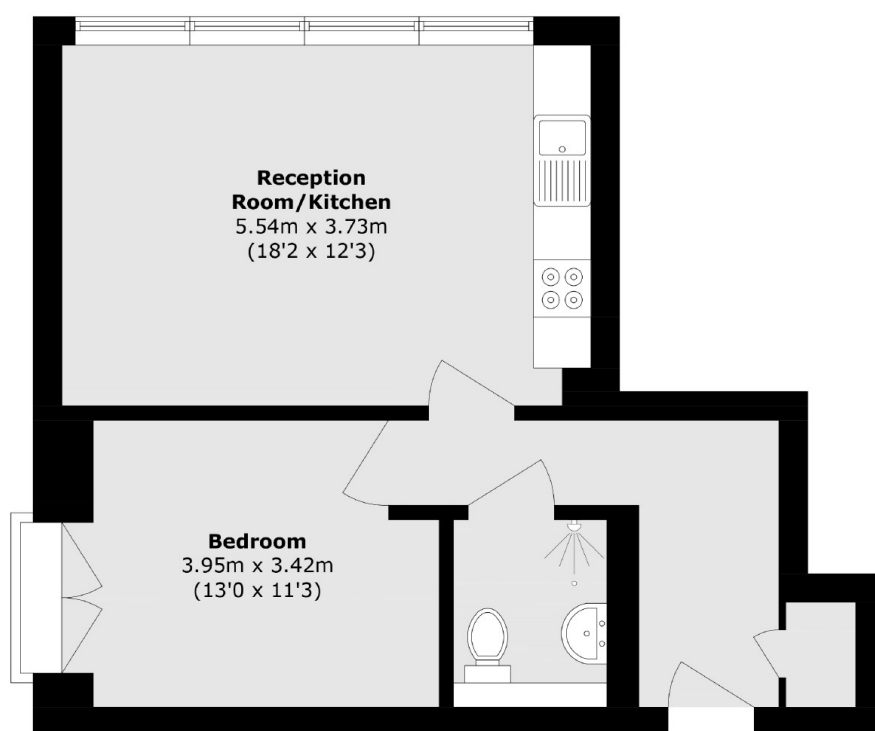
A one bedroom apartment in a warehouse conversion. This apartment offers open plan living with Juliette balcony and modern kitchen. The high ceilings and large windows flood the flat with light throughout.

Essex Road is a short stroll away providing access to Great Northern Line which takes you into Moorgate in 7 minutes. Angel and Highbury and Islington are also within walking distance providing access to the Northern Line, Victoria Line and Overground.

Features

- Warehouse Conversion
- Juliette Balcony
- Gated Development
- Open Plan
- En suite Bathroom

Elmore Street, London, N1



Total area (approx.): 45.2 sq. m (486.5 sq. ft)