

Ritchie Street, N1

£520,000

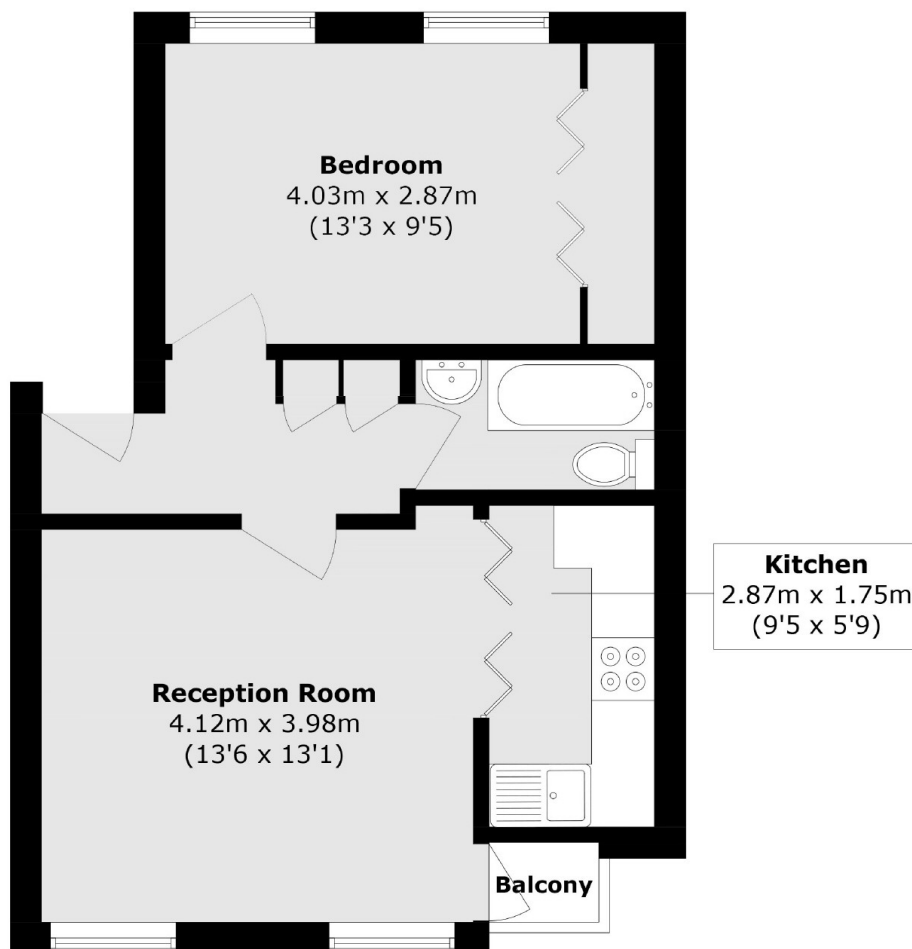
A top floor apartment in Central Angel. This one bedroom flat is bright throughout with a semi open plan kitchen, private balcony and ample storage.

This flat is ideally located close to shops and amenities such as M&S, Waitrose, Sainsbury's and the boutique shops on Chapel market. Angel station is also on your doorstep.

Features

- One Bedroom
- Separate Storage Room
- Private Balcony
- Bright Throughout
- Top Floor
- Chain Free

Ritchie Street, London, N1



Total area (approx.): 43.3 sq. m (466.0 sq. ft)

Balcony area (approx.): 7.9 sq. m (85.0 sq. ft)