



Baalbec Road, N5

£519 Per week

A bright and spacious two double bedroom flat set within this well presented period conversion with a semi open plan kitchen/living room. The flat has original features throughout including high ceilings and a fireplace, plus a small balcony.

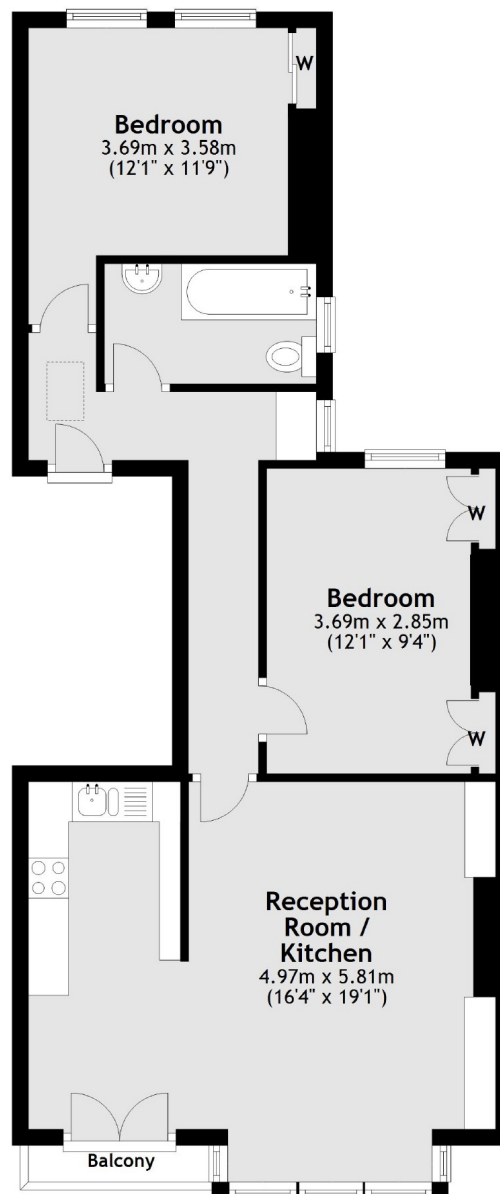
Baalbec Road is located just moments from Highbury Fields with Highbury Barn also nearby with an array of shops and cafes. Highbury & Islington and Canonbury stations are both only 0.3 miles away offering great links around the City.

Features

- Two Double Bedrooms
- Period Conversion
- Original Features
- Balcony
- Highbury Fields Nearby
- Excellent Transport Links

Baalbec Road, London, N5

First Floor



Total area: approx. 61.1 sq. metres (657.3 sq. feet)

Contact

To arrange a viewing call our office on the number below or visit our website.



Energy Rating: D. We aim to make our particulars both accurate and reliable. However they are not guaranteed; nor do they form part of an offer or contract. If you require clarification on any points then please contact us, especially if you're traveling some distance to view. Please note that appliances and heating systems have not been tested and therefore no warranties can be given as to their good working order.