



Spencer Place, N1

£895 Per week

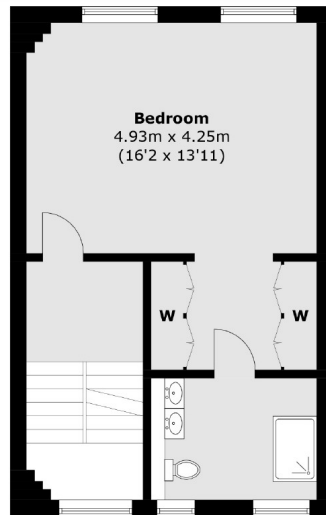
A delightful house set within a gated development and laid out over four floors with three double bedrooms and three bathrooms. The property has a spacious double reception with balcony, a separate kitchen diner and comes with a parking space.

The property is located in a private development just off Canonbury Lane, making it perfectly located for the range of amenities Upper Street has to offer. Highbury & Islington and Angel stations are nearby as well as a range of bus routes.

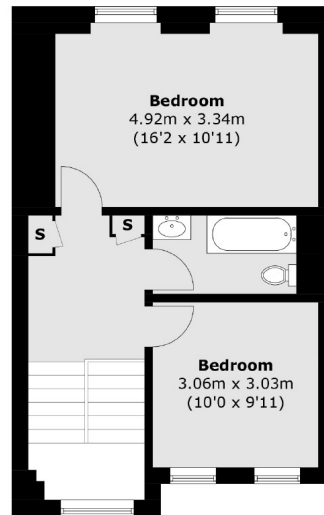
Features

- Three Bedrooms
- Three Bathrooms
- Gated Development
- Wooden Flooring
- Excellent Transport Links
- Nearby Amenities

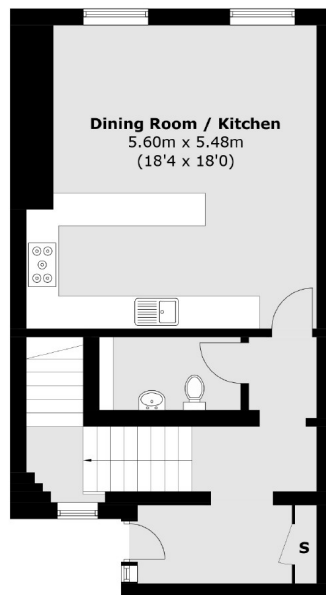
Spencer Place, London, N1



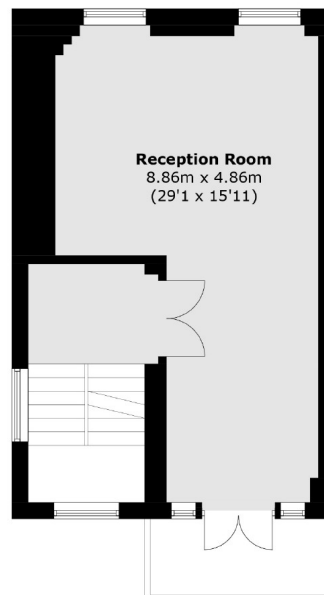
Second Floor



Third Floor



Ground Floor



First Floor

Total area (approx.): 191.7 sq. m (2,063.3 sq. ft)
External area : 4.6 sq. m (49.5 sq. ft)

Contact

To arrange a viewing call our office on the number below or visit our website.



Energy Rating: C. We aim to make our particulars both accurate and reliable. However they are not guaranteed; nor do they form part of an offer or contract. If you require clarification on any points then please contact us, especially if you're traveling some distance to view. Please note that appliances and heating systems have not been tested and therefore no warranties can be given as to their good working order.