



Essex Road, N1

£575,000

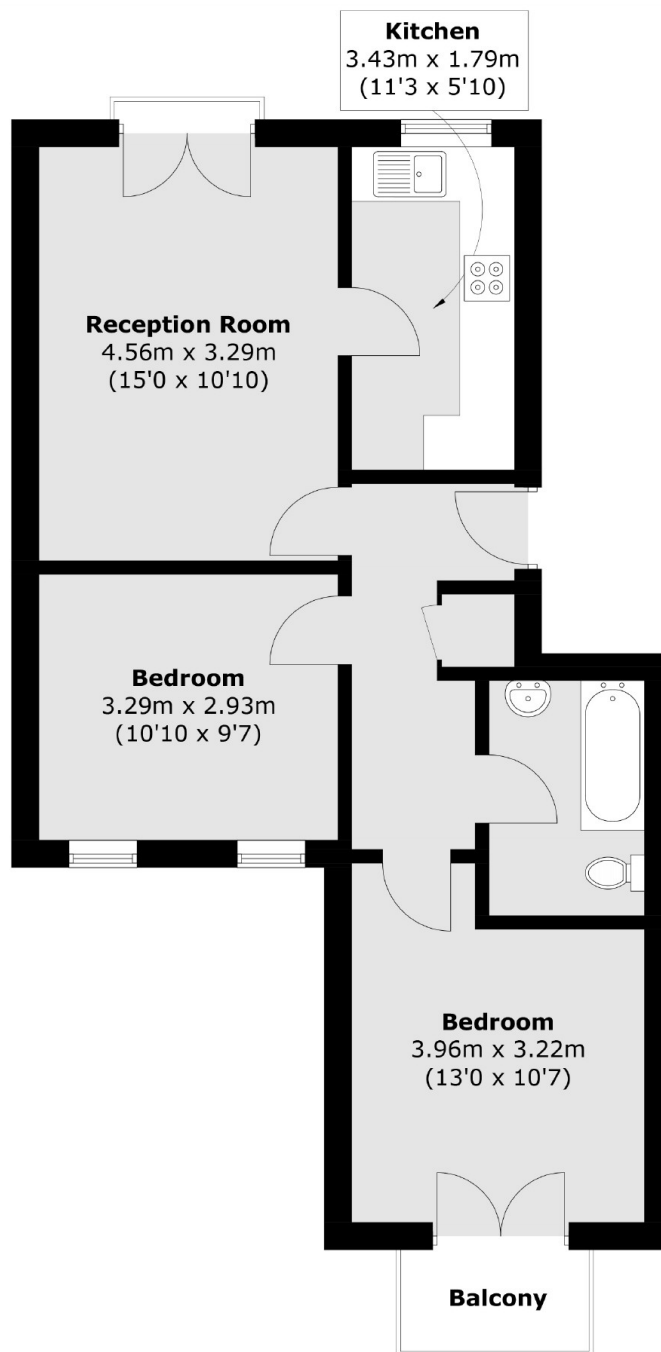
A two bedroom lateral flat on the top floor of a small purpose built block. This lovely home is bright throughout with both north and south facing balconies and large communal roof top terrace. It has two rear facing double bedrooms and a separate kitchen living space.

Nearby Essex Road station has a direct link into Moorgate and both Angel (Northern) and Highbury & Islington (Victoria, Overground) stations are within easy walking distance. Upper Street with its selection of shops, bars and restaurants is also just on the door stop.

Features

- Modern Development
- Private Balcony
- Communal Terrace
- Wood Flooring
- Centrally located

Essex Road, London, N1



Total area (approx.): 56.6 sq. m (609.2 sq. ft)
Balcony: 2.3 sq. m (24.7 sq. ft)