



Essex Road, N1

£600,000

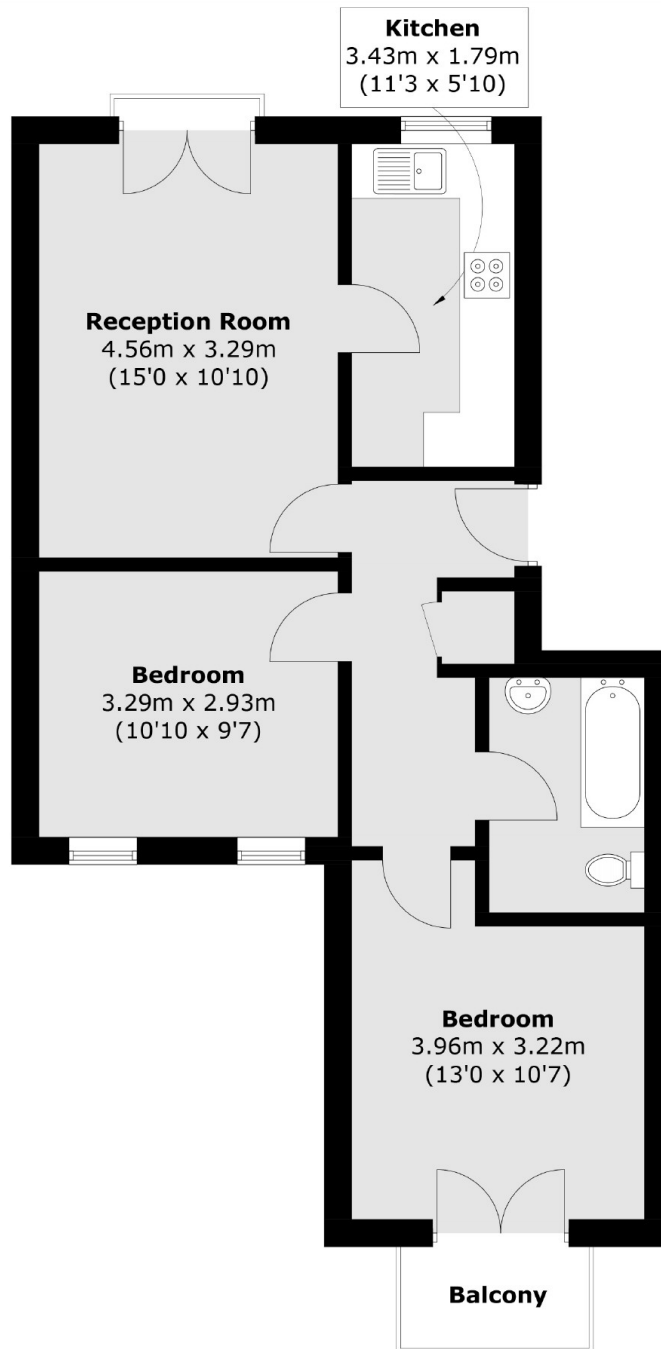
A two bedroom lateral flat on the top floor of a small purpose built block. This lovely home is bright throughout with both north and south facing balconies and large communal roof top terrace. It has two rear facing double bedrooms and a separate kitchen living space.

Nearby Essex Road station has a direct link into Moorgate and both Angel (Northern) and Highbury & Islington (Victoria, Overground) stations are within easy walking distance. Upper Street with its selection of shops, bars and restaurants is also just on the door stop.

Features

- Modern Development
- Private Balcony
- Communal Terrace
- Wood Flooring
- Centrally located

Essex Road, London, N1



Total area (approx.): 56.6 sq. m (609.2 sq. ft)
Balcony: 2.3 sq. m (24.7 sq. ft)

Dexters

Islington
76 Upper Street
London
N1 0NU
Sales
020 7483 6373

Energy Rating: C. We aim to make our particulars both accurate and reliable. However they are not guaranteed; nor do they form part of an offer or contract. If you require clarification on any points then please contact us, especially if you're traveling some distance to view. Please note that appliances and heating systems have not been tested and therefore no warranties can be given as to their good working order.

 **RICS** | Regulated
Estate Agent
and Letting Agent

[dexters.co.uk](https://www.dexters.co.uk)