



Packington Street, N1

£1,300,000

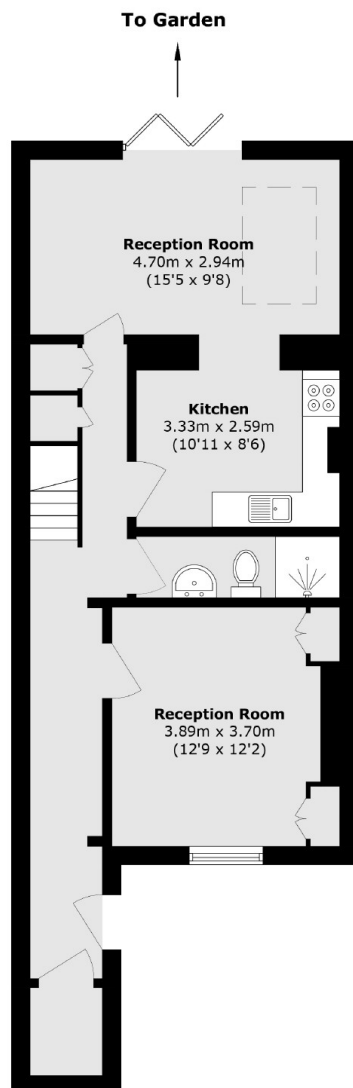
Located in the heart of Angel, this three bedroom garden flat is set within a charming period conversion. Spanning two floors, the property features a spacious reception room, an open-plan dine-in kitchen leading to a private garden, and two modern bathrooms. The home benefits from a private entrance and ample storage. Chain-free and with a share of the freehold.

Close to Upper Street's amenities and excellent transport links. Angel Station is just under a mile away making connections to the City easy for commuters. Regent's Canal is just under half a mile away, perfect for a run or Sunday stroll.

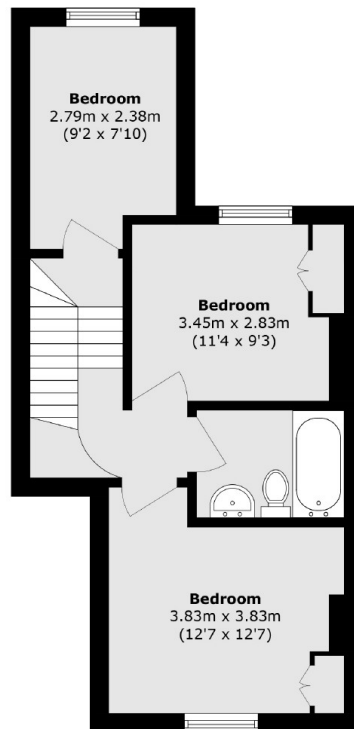
Features

- Three Bedrooms
- Two Bathrooms
- Share of Freehold
- Private Entrance
- Private Garden
- Chain Free

Packington Street, London, N1



Lower Ground Floor



Ground Floor

Total area (approx.): 103.9 sq. m (1118.3 sq. ft)