



Arlington Avenue, N1

£700,000

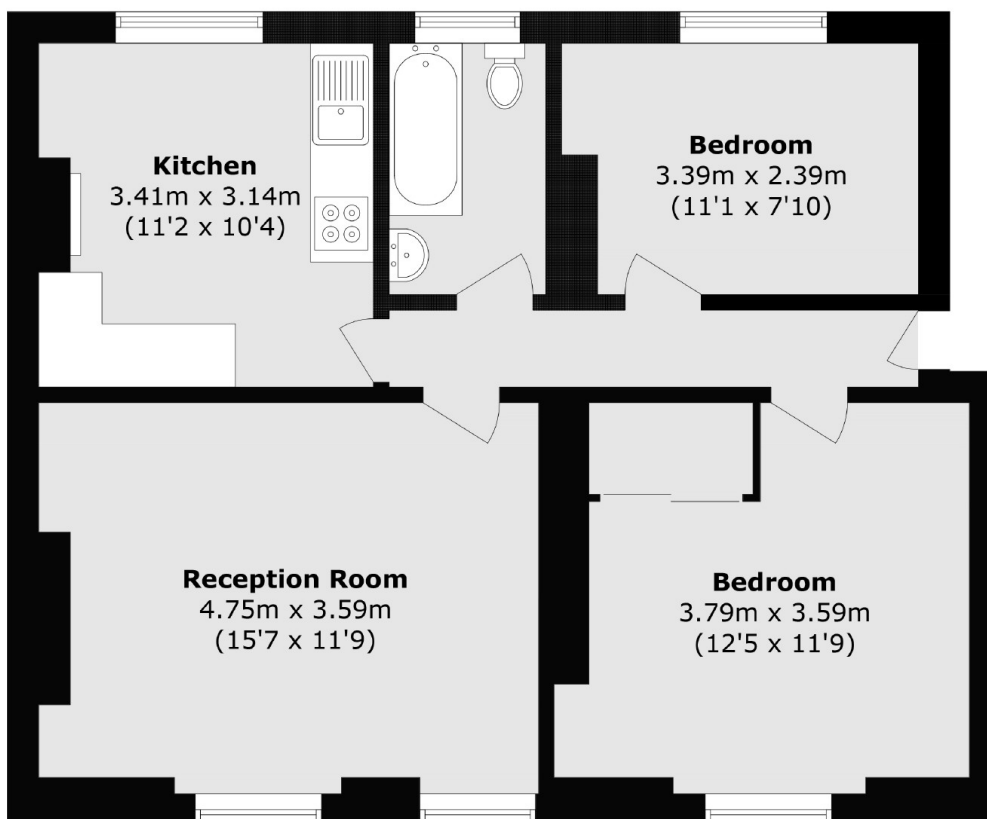
Arlington Avenue is situated in the sought after Islington area, the apartment has two bedrooms, a large living space, and a separate kitchen. The apartment also benefits from a south east facing garden, whilst also being a short walk from local community gardens.

Angel Station (Northern Line) Approx. 0.7 miles, Essex Road Station (National Rail) Approx 0.7 miles. Additionally, multiple bus routes nearby have direct connections to the City and West End.

Features

- Natural Light
- Two Bedroom
- Separate Kitchen
- Private Garden
- Prime Location
- Built-in Storage

Arlington Avenue, London, N1



Total area (approx.): 61.4 sq. m (660.9 sq. ft)