



Windsor Street, N1

£3,000 Per week

A three double bedroom apartment in central Islington with modern interiors, good sized living space and a private balcony, which makes it ideally suited for professional sharers.

Windsor Street is situated moments from Upper Street's array of restaurants, bars and shops. Transport links include Angel, Highbury and Islington and Essex Road stations all within easy reach plus numerous bus routes.

Features

- Three Double Bedrooms
- Spacious Reception Room
- Excellent Location
- Private Balcony
- Modern Throughout
- Close to Angel Tube

Windsor Street, London, N1

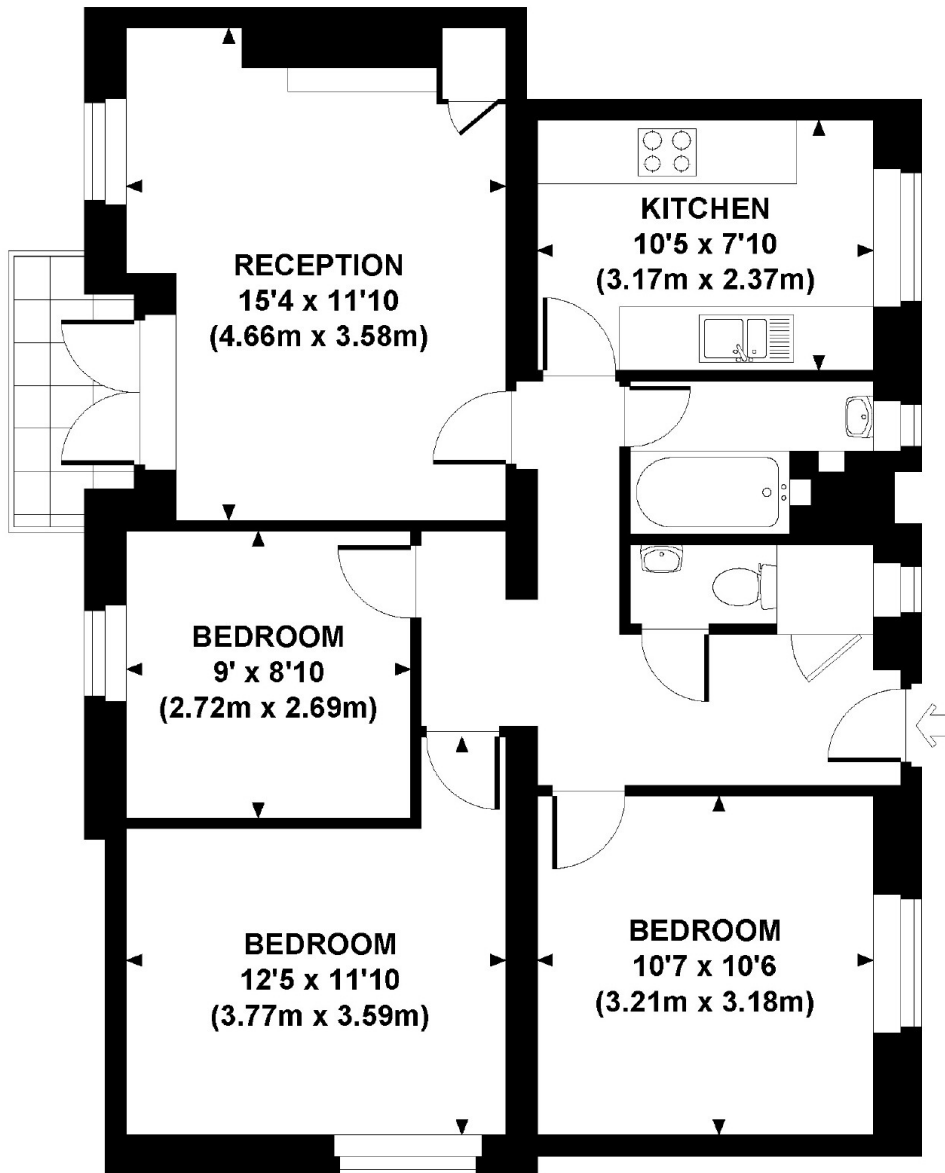
TURNBULL HOUSE, WINDSOR STREET, N1

Approx. gross internal area

756 Sq Ft / 70.2 Sq M.

Representation of current layout

Not to scale.



THIRD FLOOR