



## Kingsland Road, E8

### £650,000

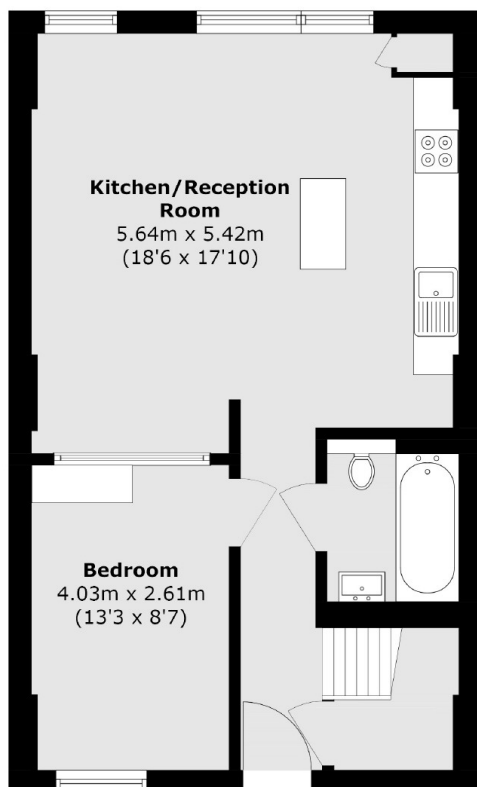
A spacious and contemporary split-level two bed apartment situated in one of East London's most thriving areas. This well presented property offers over 900sqft of living space including a modern open plan kitchen/ dining area.

Kings wharf is a quiet and peaceful gated residence set well back from Kingsland Road and is conveniently located for Haggerston Overground (0.1 miles) and the many bus routes serving Liverpool Street and the City found on Kingsland Road. The extensive selection of shops, bars & restaurants found in Shoreditch (1.1 miles), Dalston (0.5 miles) and Haggerston are also within easy reach.

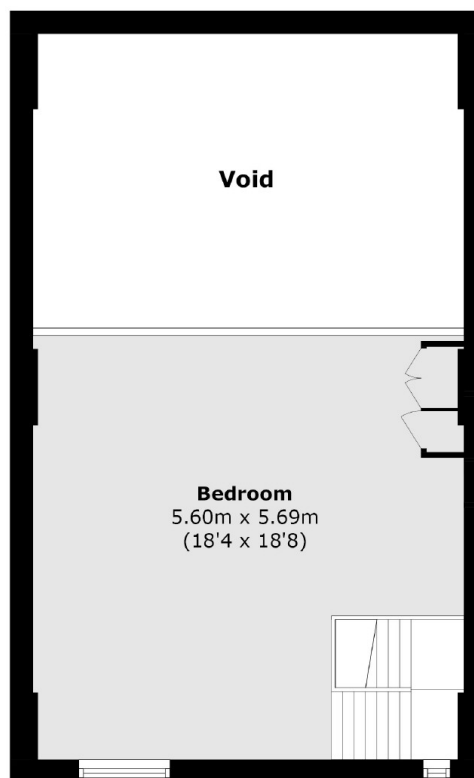
### Features

- Double height ceilings
- Chain free
- Gated Development
- Lift Access
- Open Plan

# Kingsland Road, London, E8



**Third Floor**



**Fourth Floor**

Total area (approx.): 86.7 sq. m (933.2 sq. ft)  
(Excluding Void)