



## Balls Pond Road, N1

£525,000

This one bedroom apartment with a generously sized open plan living space and office, is ideally located in the desirable Dalston and Hackney area. This split-level home has a modern interior with wood flooring throughout and offers excellent transport links and local amenities.

The flat is located on Balls Pond Road, in the Dalston area. Local stations include Dalston Kingsland Station (Mildmay Line) which is Approx 0.2 miles, with direct links to Highbury and Islington, and Stratford. Dalston Junction Station (Windrush Line) Approx 0.1 miles, with direct links to the city.

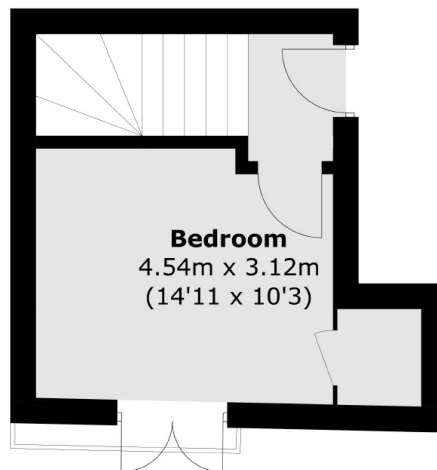
### Features

- Open Plan Living
- Close to Transport
- Central Location
- Split Level
- Modern Interior

# Balls Pond Road, London, N1



**Lower Ground Floor**



**Ground Floor**

Total area (approx.): 69.1 sq. m (743.8 sq. ft)  
Terrace: 5.0 sq. m (53.8 sq. ft)