



## Isabella Mews, N1

£825,000

This well presented two-bedroom, two-bathroom (plus additional W/C) freehold mews house is offered with no onward chain. Spread across three floors, the property boasts two generous double bedrooms, one including an ensuite bathroom. Large windows throughout flood the space with natural light, creating a bright and welcoming atmosphere.

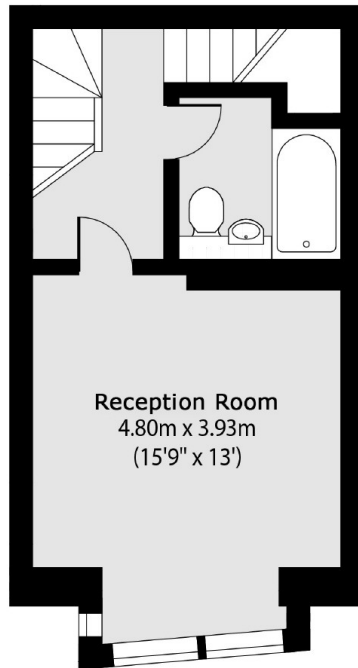
Isabella Mews is a quiet, tucked-away location within easy reach of all the local amenities of, De Beauvoir, Dalston, Newington Green and Essex Road.

The closest station can be found at Dalston Junction Overground offering direct links to Highbury & Islington (Victoria line), Whitechapel (Elizabeth Line) and Canada Water (for Jubilee Line Canary Wharf connection) as well as direct bus routes to the City and West End.

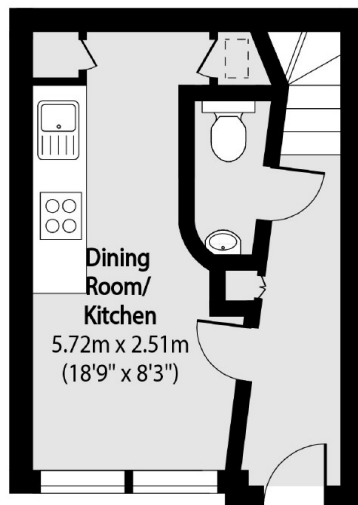
### Features

Mews House  
Freehold  
Two Bedrooms  
Two Bathrooms + W/C  
Chain Free

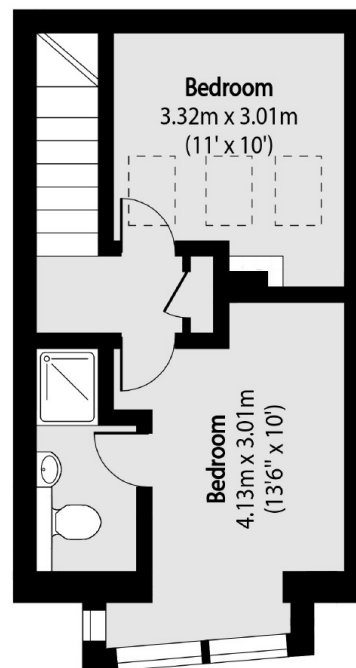
# Isabella Mews, London, N1



First Floor



Ground Floor



Third Floor

Total area (approx): 83.36 sq m (897 sq. ft)

## Dexters

Islington  
76 Upper Street  
London  
N1 0NU  
Sales  
020 7483 6373

Energy Rating: C. We aim to make our particulars both accurate and reliable. However they are not guaranteed; nor do they form part of an offer or contract. If you require clarification on any points then please contact us, especially if you're traveling some distance to view. Please note that appliances and heating systems have not been tested and therefore no warranties can be given as to their good working order.

 **RICS** | Regulated  
Estate Agent  
and Letting Agent

[dexters.co.uk](https://www.dexters.co.uk)