



Wilton Square, N1

£1,500,000

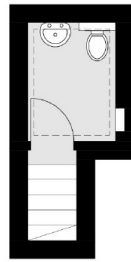
A wonderful two bedroom Victorian House in a prime location overlooking Wilton Square with a sunny private garden, an abundance of living space and close to excellent amenities.

Wilton Square is wonderfully tucked away off New North Road and there are numerous transport links nearby including the buses from both New North Road & Essex Road and the trains from Angel, Old Street (Northern Line) and Essex Road Rail Station (First Capital Connect).

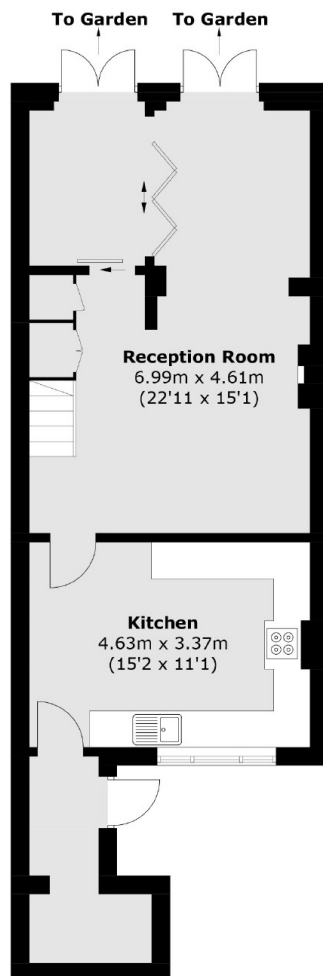
Features

- Freehold House
- Overlooking the Square
- Two Bathrooms
- Private Garden
- Private Terrace
- Large Kitchen
- Grade II Listed

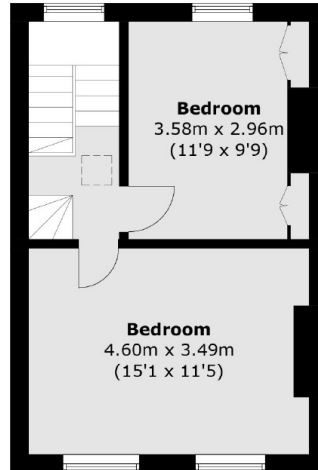
Wilton Square, London, N1



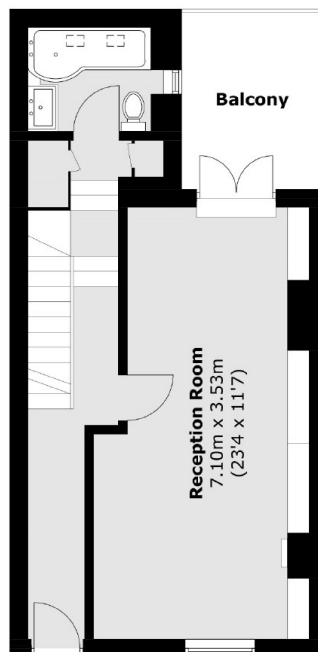
Second Floor



Lower Ground Floor



First Floor



Ground Floor

Total area (approx.): 130.9 sq. m (1,408.9 sq. ft)
Balcony: 6.8 sq. m (73.2 sq. ft)