



## Westbourne Road, N7

### £850,000

A split level, two bedroom flat split across the top two floors of this Victorian conversion. There are two double bedrooms and family bathroom on the top floor, with a dual aspect, open plan kitchen/living room on the floor below.

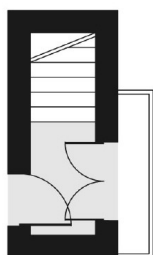
This apartment is located just off of Arundel Square and is half a mile from Highbury and Islington Station (Victoria and Overground). The many shops, amenities and eateries of Upper Street are also half a mile walk.

### Features

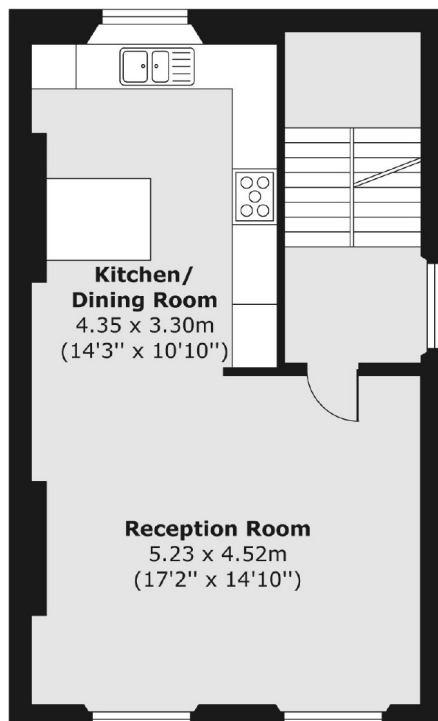
- Victorian Conversion
- Two Bedrooms
- Open Plan
- Chain Free
- Top Floors
- Share of Freehold

# Westbourne Road, London, N7

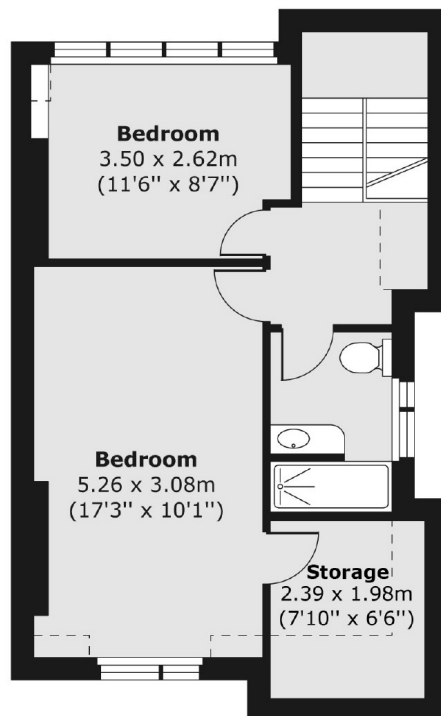
First Floor



Second Floor



Third Floor



Total area (approx.) 92.17 sq. m (992 sq. ft)  
Balcony area (approx.) 0.90 sq. m (10 sq. ft)