



Gifford Street, N1

£2,600 Per week

A well presented two double bedroom apartment set within this purpose built development. This property has an open plan kitchen reception with integrated appliances, wood flooring in the living room and a modern finish throughout.

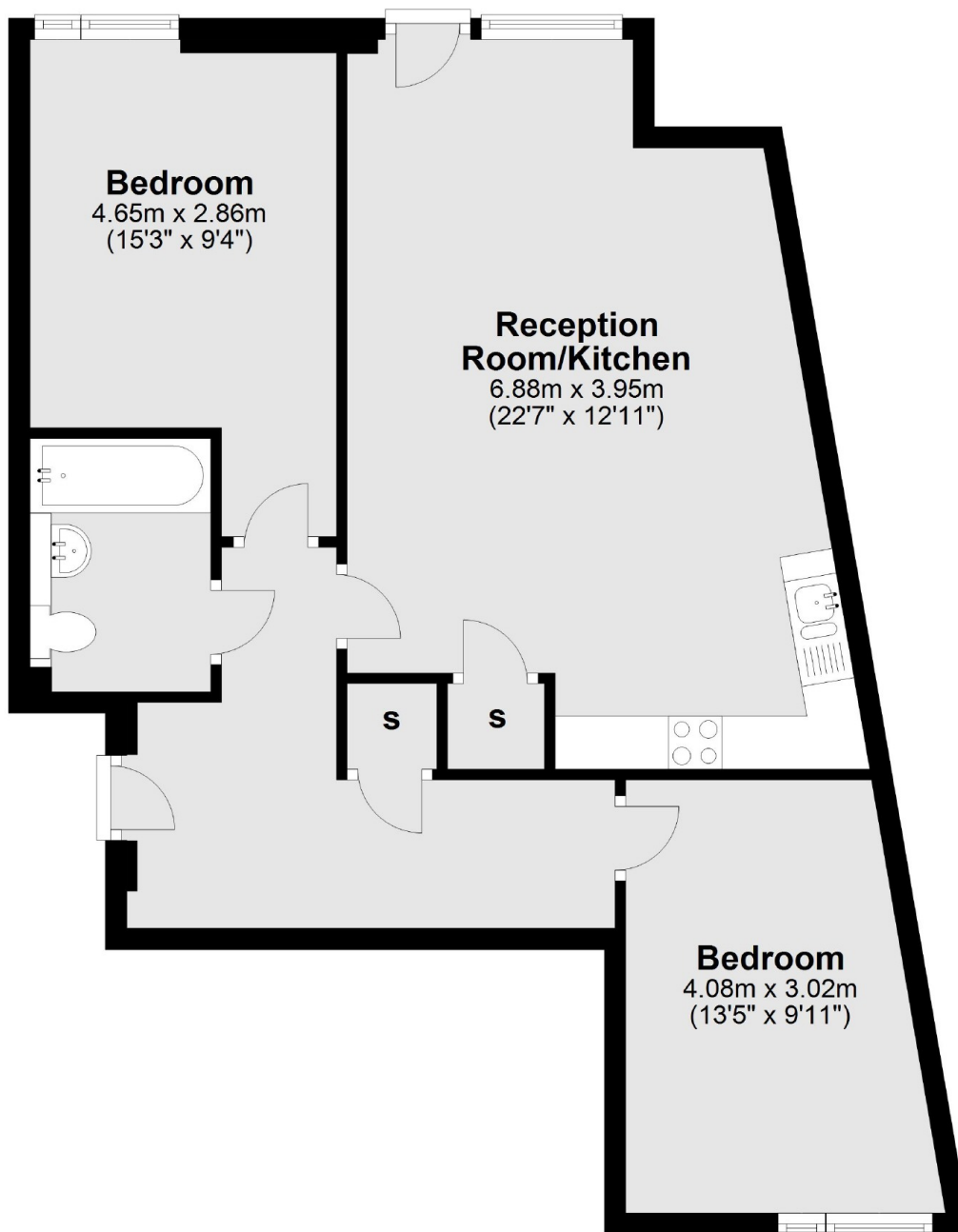
Providing great access to Caledonian Road & Barnsbury Station and Kings Cross/St Pancras, plus a huge choice of shops, bars and restaurants within a short walk at Granary Square and Coal Drops Yard.

Features

- Two Double Bedrooms
- Open Plan Living
- Storage
- Integrated Appliances
- Modern
- Wood Floors

**Gifford Street,
London, N1**

Second Floor



Total area: approx. 66.5 sq. metres (715.6 sq. feet)

Dexters

Islington
76 Upper Street
London
N1 0NU
Lettings
020 7483 6374

Energy Rating: B. We aim to make our particulars both accurate and reliable. However they are not guaranteed; nor do they form part of an offer or contract. If you require clarification on any points then please contact us, especially if you're traveling some distance to view. Please note that appliances and heating systems have not been tested and therefore no warranties can be given as to their good working order.

 **RICS** | Regulated
Estate Agent
and Letting Agent

[dexters.co.uk](https://www.dexters.co.uk)