



## Raleigh Mews, N1

£425,000

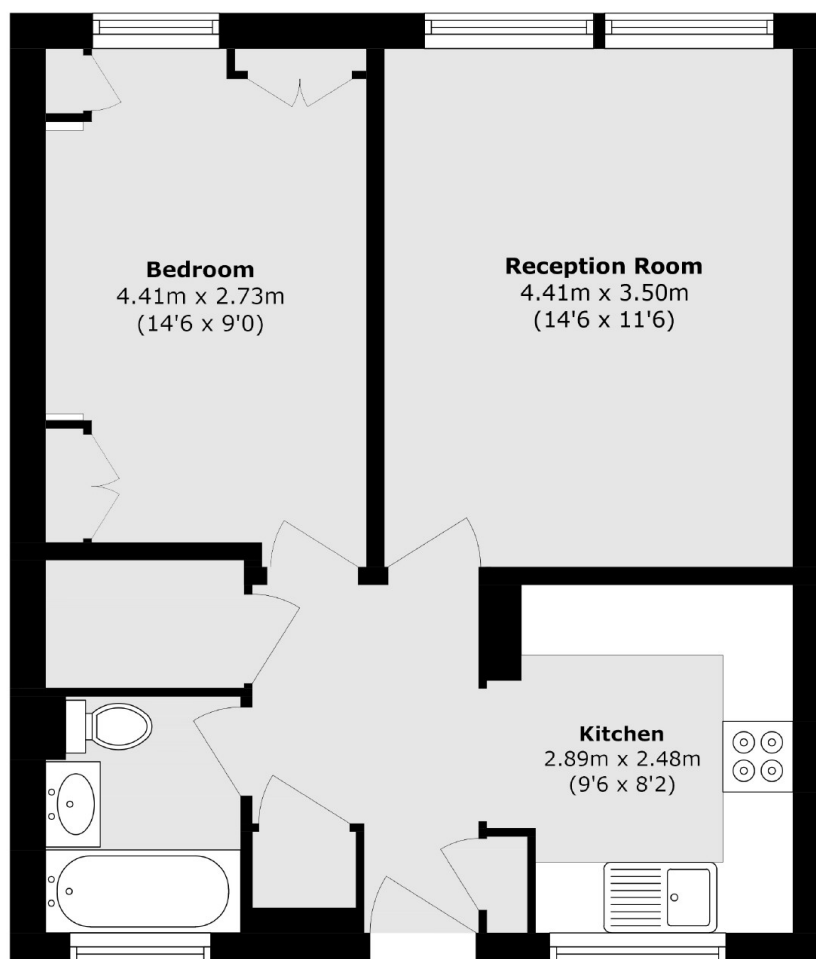
A generously sized one-bedroom apartment in a quiet mews, offering a bright south facing living space and a separate kitchen. The property retains its original charm and provides ample storage throughout. Ideally located near Angel and Islington, with excellent transport links and local amenities just a short walk away.

Angel Station (Northern Line) Approx.0.3 miles , Essex Road Station (National Rail) Approx.0.4 miles and Multiple bus routes nearby with connections to the City and West End.

### Features

- One Bedroom
- Separate Kitchen
- Close to Transport
- South Facing Reception
- Chain Free

# Raleigh Mews, London, N1



Total area (approx.): 47.8 sq. m (514.5 sq. ft)