



Stonefield Street, N1

£700,000

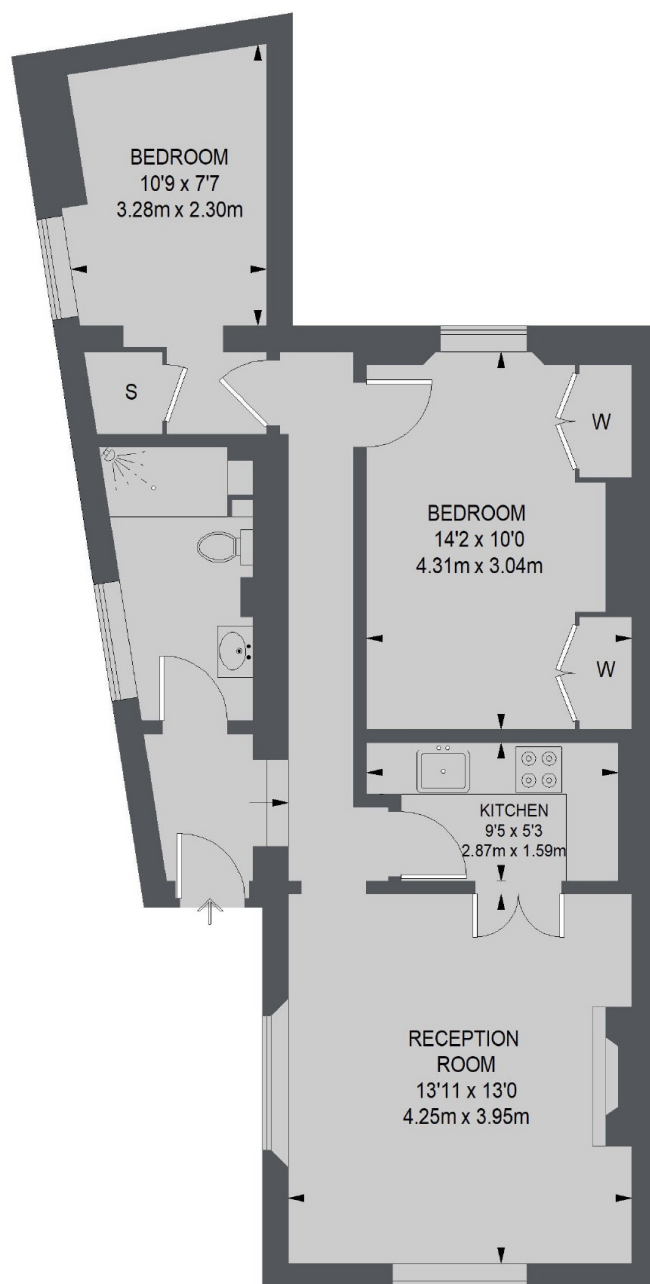
A beautifully presented period property in an excellent location in the heart of Angel. This Share of Freehold property benefits from a private entrance and comprises a modern kitchen, bathroom, semi open plan reception room and communal terrace.

Conveniently located for the amenities of Islington's Upper Street (0.1 Miles approx.) Angel Underground Station can be found a short walk away (0.4 Miles approx.) Highbury and Islington Station is also close by.

Features

- Share of Freehold
- Private Entrance
- Newly Renovated
- High Ceiling
- Communal Terrace
- Nearby Transport Links

Stonefield Street, London, N1



TOTAL APPROX. FLOOR AREA 656 SQ. FT. (60.99 SQ. M.)

Dexters

Islington
76 Upper Street
London
N1 0NU
Sales
020 7483 6373

Energy Rating: C. We aim to make our particulars both accurate and reliable. However they are not guaranteed; nor do they form part of an offer or contract. If you require clarification on any points then please contact us, especially if you're traveling some distance to view. Please note that appliances and heating systems have not been tested and therefore no warranties can be given as to their good working order.

 **RICS** | Regulated
Estate Agent
and Letting Agent

[dexters.co.uk](https://www.dexters.co.uk)