



## Mildmay Road, N1

### £850,000

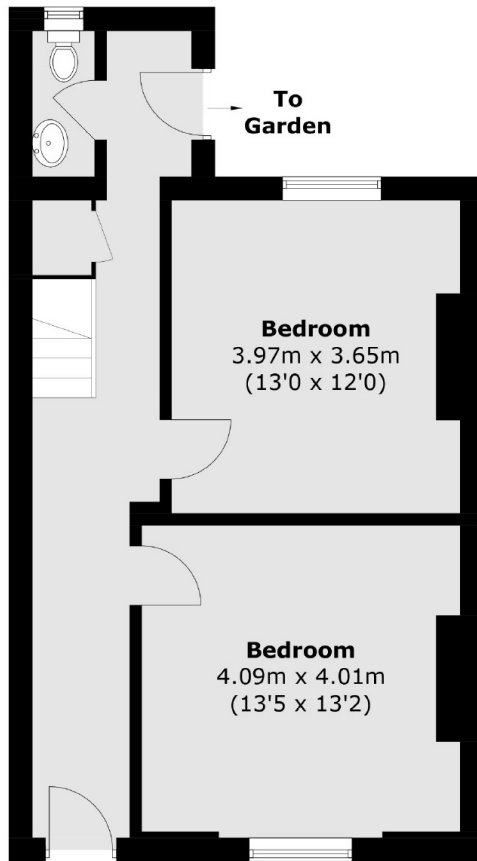
A well presented, two bedroom maisonette within a Victorian conversion in Islington. This home is arranged over two floors, with a private entrance, double height ceilings, and south facing garden.

Mildmay Road is within easy reach of the restaurants and cafés of popular Newington Green, as well as the various shops in Dalston and along Kingsland High Street. Dalston Kingsland and Juction Overground stations are around a quarter of a mile walk and there are numerous nearby bus routes taking you straight into the City.

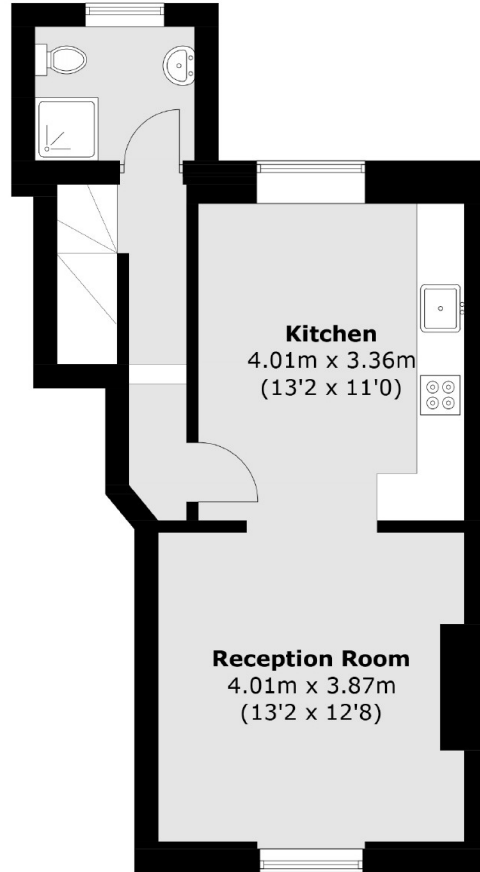
### Features

- Two Bedrooms
- Maisonette
- Private Entrance
- South Facing Garden
- Chain Free
- Victorian Conversion

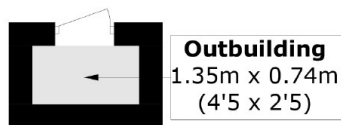
# Mildmay Road, London, N1



**Lower Ground Floor**



**Ground Floor**



**Outbuilding**  
(Not Shown In Actual  
Location / Orientation)

Total area (approx.): 87.1 sq. m (937.5 sq. ft)  
Outbuilding : 1.1 sq. m (11.8 sq. ft)