

## City Road, EC1V

### £400,000

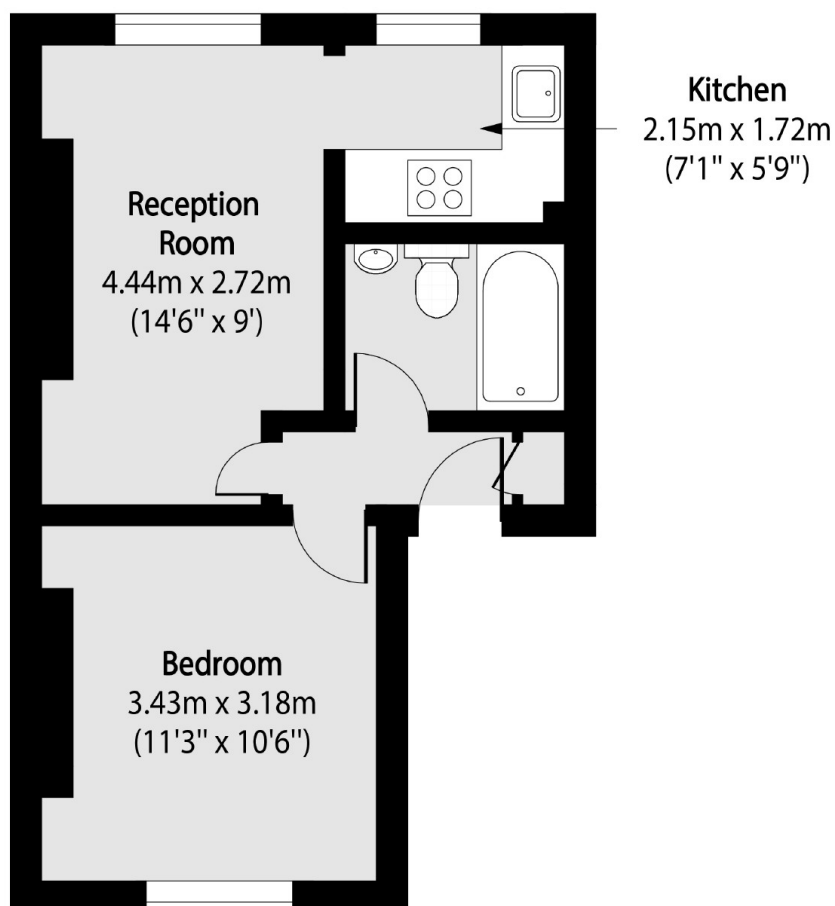
A spacious, bright and well-proportioned one bedroom apartment located within a sought-after location close to Angel. The apartment is set on the second floor of this charming converted period townhouse, it has a spacious bedroom with room for ample storage, a semi-open plan living area with integrated appliances and a good size bathroom. The property is present beautifully throughout with contemporary interiors.

Great location close to the cafe's, bars, eateries and further amenities found on Upper Street as well as nearby Shoreditch. Excellent transport links are provided by Kings Cross underground and mainline stations, St Pancras International, Angel and Old Street underground station and numerous bus links for access to all corners of the City and beyond.

### Features

- One Double Bedroom
- Bright Modern Interiors
- Period Conversion
- Sought After Location
- Great Transport Links

# City Road, London, EC1V



Total area (approx): 33.52 sq m (361 sq. ft)