



Compton Avenue, N1 £525,000

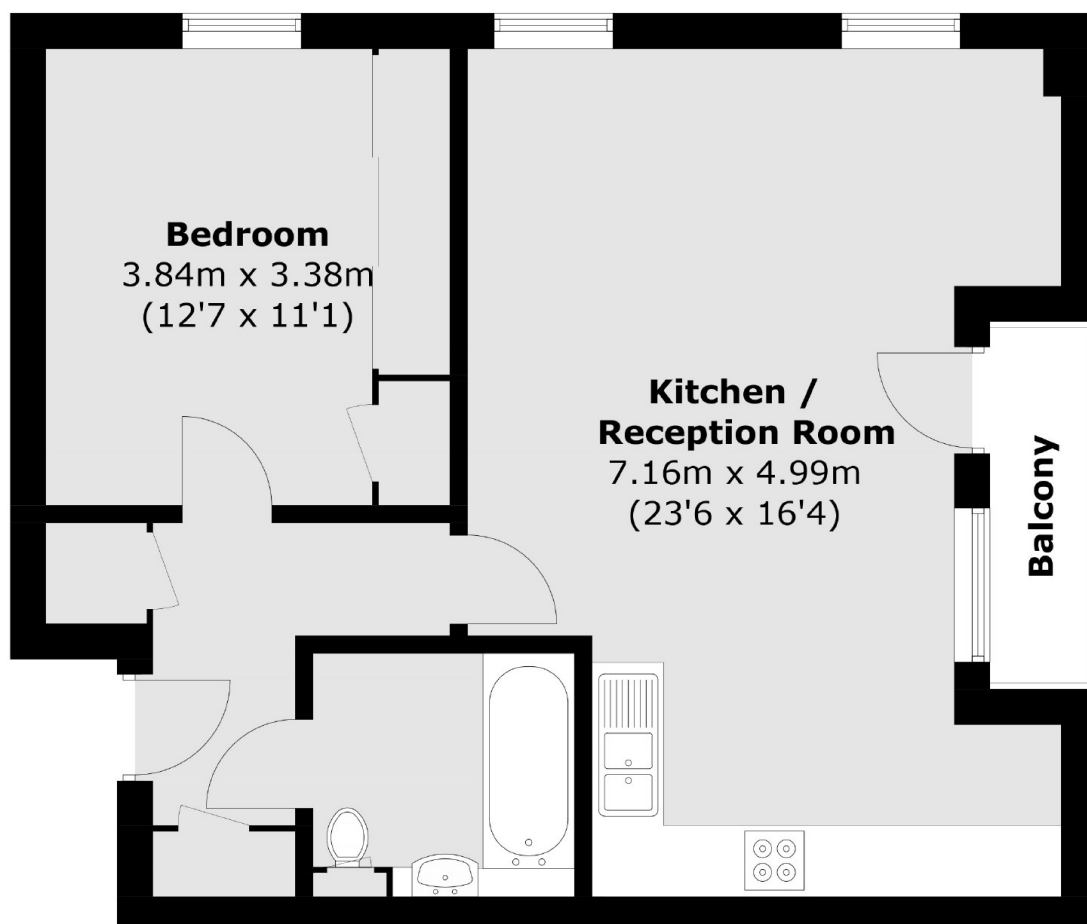
This immaculate, spacious one bedroom flat is in the desirable Canonbury area. The property is thoughtfully arranged with an open plan kitchen/diner, fitted storage, private terrace and is being offered chain free.

Transport can be found at Highbury & Islington station (National Rail & Victoria Line), Essex Road station and Angel Station (Northern Line). Highbury Fields and it's vast green space can be found just north of Highbury Corner a short walk away.

Features

- Modern Development
- Open Plan Kitchen
- Abundance of Storage
- Central Location
- Ground Floor
- Secure development

Compton Avenue, London, N1



Ground Floor

Total area (approx.): 56.0 sq. m (602.8 sq. ft)
Balcony : 2.5 sq. m (26.9 sq. ft)