



Loxford Gardens, N5

£700,000

A three bedroom apartment located in popular Loxford Gardens. The property benefits from 24 hour concierge, a large wrap around patio, a separate eat in kitchen and an external storage room.

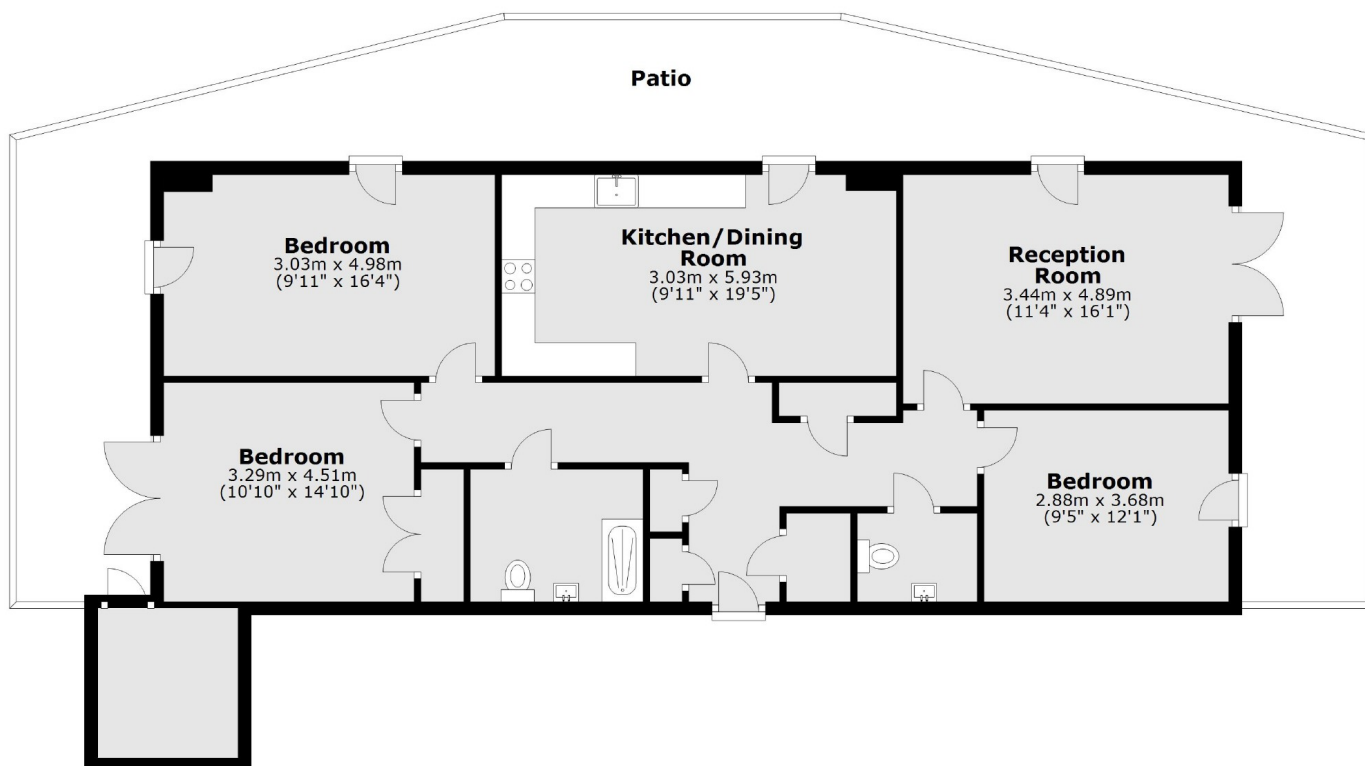
Loxford Gardens is located close to all of the delicatessens and cafés of Highbury Barn. Arsenal (Piccadilly line), Highbury & Islington (Victoria Line/Overground) and Canonbury (Overground) stations are all within easy reach.

Features

- Three Double Bedrooms
- Wrap Around Patio
- 24 Hour Concierge
- Eat In Kitchen
- External Storage
- Secure Bike Storage

Loxford Gardens, London, N5

Lower Ground Floor



Main area: Approx. 102.7 sq. metres (1105.7 sq. feet)

Plus external storage, approx. 4.7 sq. metres (50.8 sq. feet)

Plus patio, approx. 58.3 sq. metres (627.9 sq. feet)

Dexters

Islington
76 Upper Street
London
N1 0NU
Sales
020 7483 6373

Energy Rating: B. We aim to make our particulars both accurate and reliable. However they are not guaranteed; nor do they form part of an offer or contract. If you require clarification on any points then please contact us, especially if you're traveling some distance to view. Please note that appliances and heating systems have not been tested and therefore no warranties can be given as to their good working order.

 **RICS** | Regulated
Estate Agent
and Letting Agent

[dexters.co.uk](https://www.dexters.co.uk)