

## Liverpool Road, N1

### £475,000

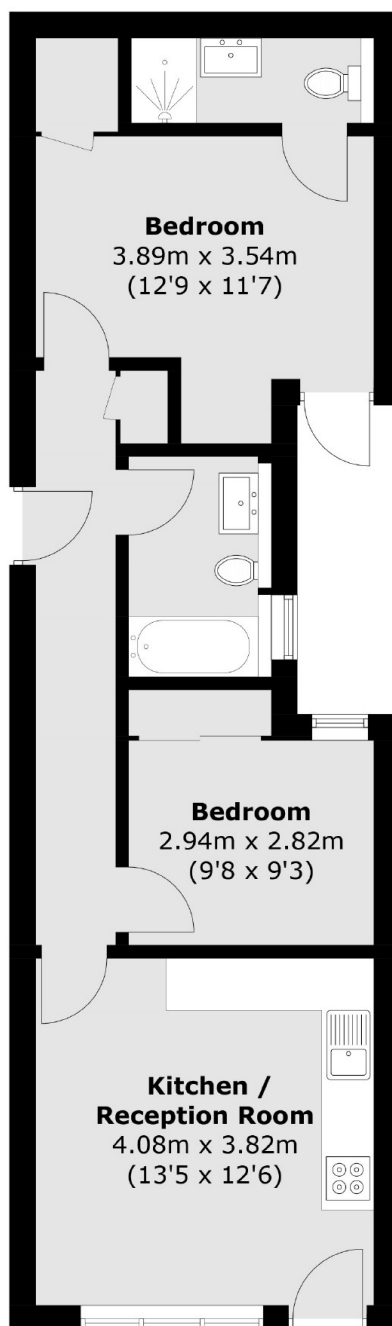
A well presented two bedroom two bathroom flat on the ground floor of a modern development conveniently located close to Highbury and Islington station. This open plan apartment has a private entrance, long lease and is being offered chain free.

Located on Liverpool Road, this property is within quarter of a mile of Highbury and Islington station (Victoria line and Overground) and within easy reach of the many shops, bars and restaurants that Upper Street has to offer.

### Features

- Two Bedroom
- Chain Free
- Private Entrance
- Private Terrace
- Two Bathrooms
- Open Plan

# Liverpool Road, London, N1



Total area (approx.): 52.3 sq. m (562.9 sq. ft)

## Dexters

Islington  
76 Upper Street  
London  
N1 0NU  
Sales  
020 7483 6373

Energy Rating: C. We aim to make our particulars both accurate and reliable. However they are not guaranteed; nor do they form part of an offer or contract. If you require clarification on any points then please contact us, especially if you're traveling some distance to view. Please note that appliances and heating systems have not been tested and therefore no warranties can be given as to their good working order.

 **RICS** | Regulated  
Estate Agent  
and Letting Agent

[dexters.co.uk](https://www.dexters.co.uk)