



Percy Circus, WC1X

£725,000

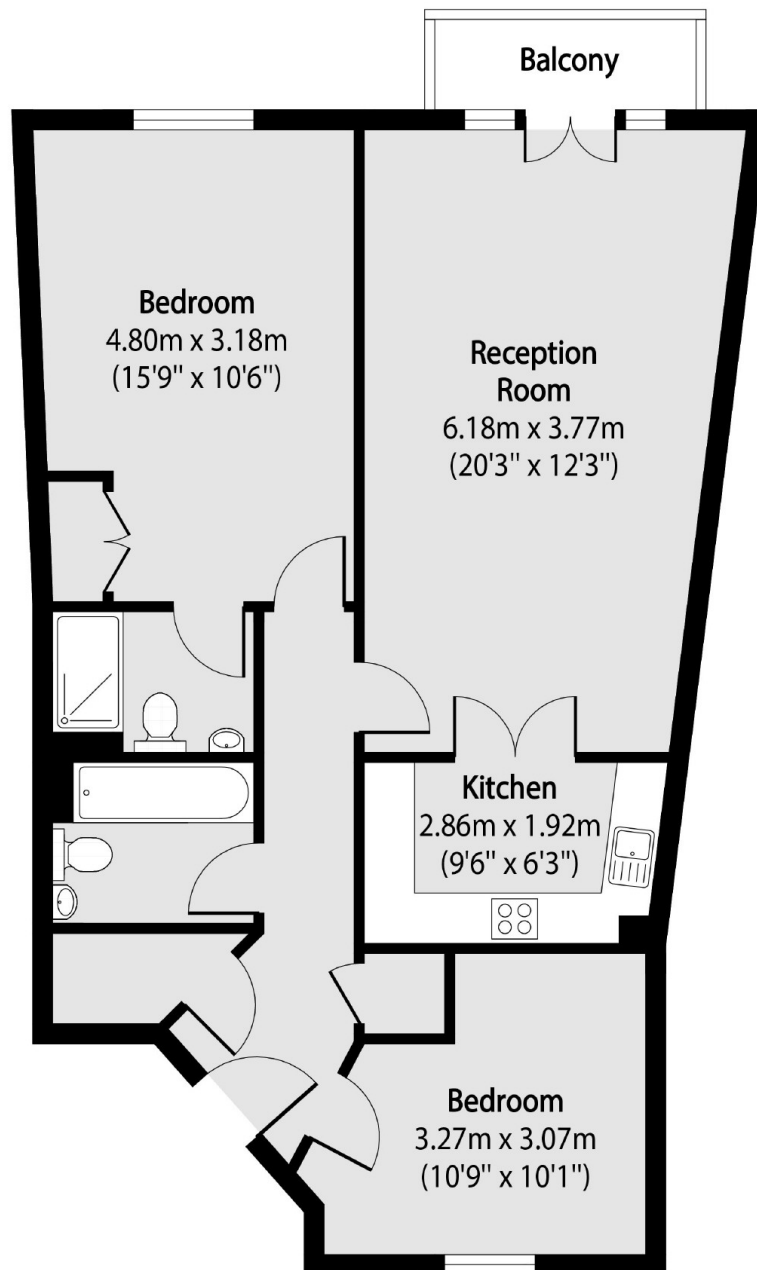
A spacious, bright and well-proportioned two bedroom apartment located on Percy Circus. A beautiful, sought-after location close to Angel Islington. The apartment is positioned on the third floor of the block and has two double bedrooms, two bathrooms and a private balcony. This flat is set in a highly desirable residential block positioned directly opposite Percy circus garden. The block is well presented and has a lift.

Excellent transport links are provided by Kings Cross underground and mainline stations, St Pancras International, Angel Islington underground station and numerous bus links for access to all corners of the City and beyond.

Features

- Two Double Bedrooms
- Two Bathrooms
- Private Balcony
- Sought After Location
- Great Transport Links

Percy Circus,
London, WC1X



Total area (approx): 65.83 sq m (708 sq. ft)

Balcony total area (approx): 2.34 sq m (25 sq. ft)