



Grosvenor Avenue, N5

£575,000

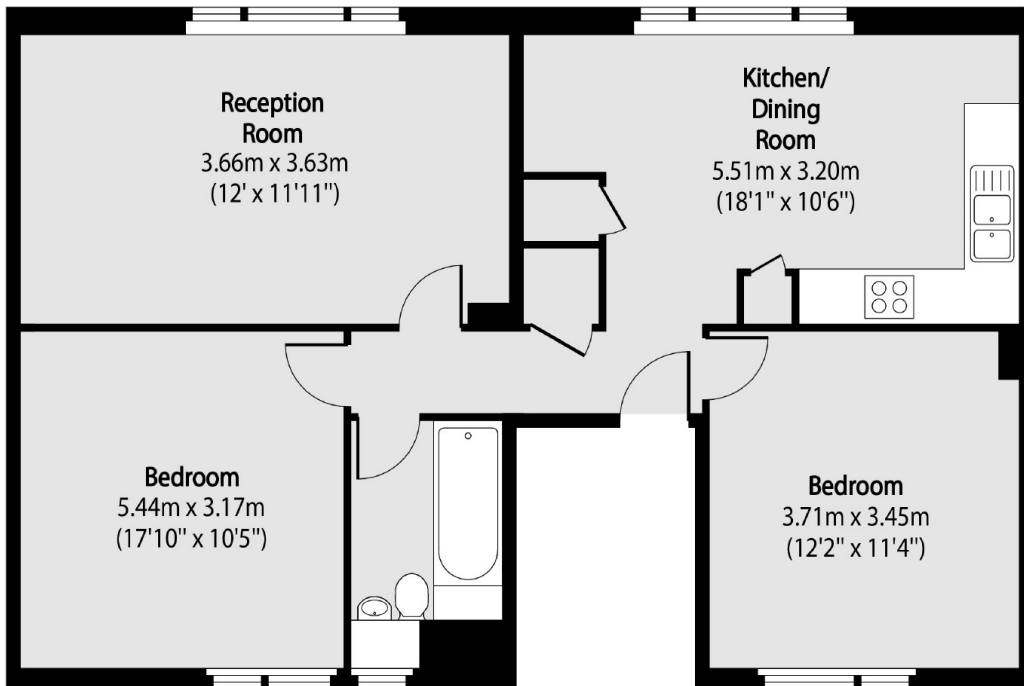
A lateral top floor, two bedroom period property located on a sought-after road off Highbury. The property benefits from two large double bedrooms, a separate kitchen to living room and a communal garden. The seller is open to extending the lease alongside the sales process.

This flat is ideally located for access to Canonbury Station (Overground) which is just around the corner where you are one stop from Highbury and Islington (Victoria). Ever popular Newington Green is also within easy reach with all of its cafés, shops and eateries.

Features

- Two Bedrooms
- Top Floor
- Period
- Communal Garden
- Chain Free
- Separate Eat-in Kitchen

Grosvenor Avenue, London, N5



Total area (approx): 70.51 sq m (759 sq. ft)