

Enfield Road, N1

£500,000

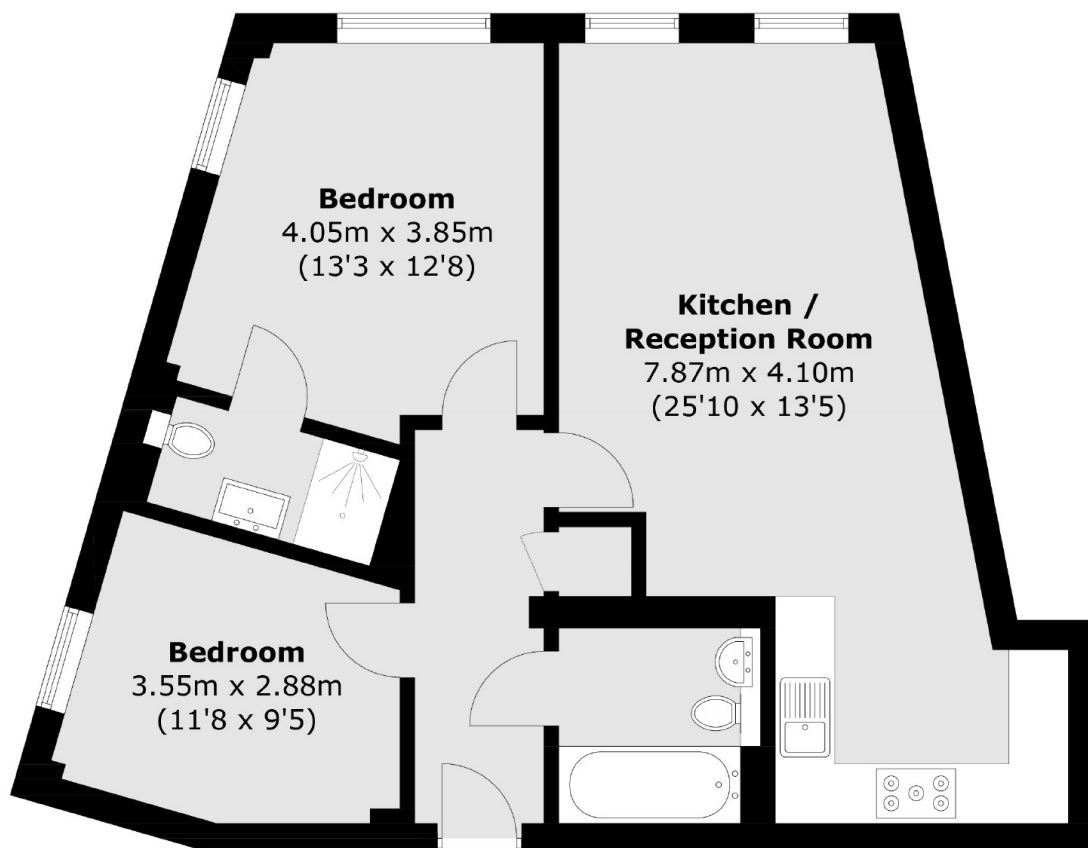
This delightful apartment boasts a modern and stylish interior, perfect for those who appreciate contemporary living. The property has a spacious open plan living room, two double bedrooms and two bathrooms all kept in fantastic condition throughout. The development itself benefits from a residents gym and day time concierge.

The property is set within De Beauvoir moments from a fabulous selection of restaurants, bars and shops on Kingsland road which, along with Haggerston station, are a short walk away.

Features

- Two Bedrooms
- Two Bathrooms
- Bright Interiors
- Day Time Concierge
- Residents Only Gym

Enfield Road, London, N1



Total area (approx.): 64.5 sq. m (694.3 sq. ft)