



Caledonian Road, N7

£600,000

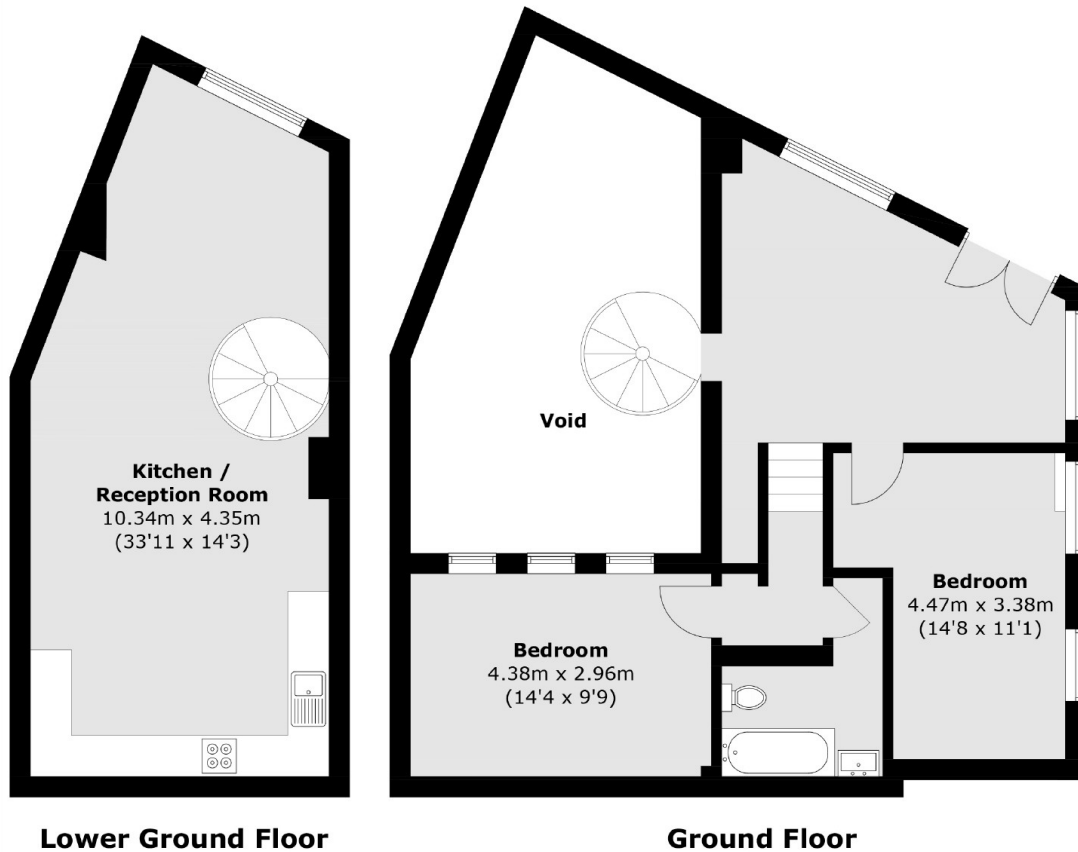
Set within a Victorian pub conversion, this striking two bedroom apartment spans over 1,000sqft. Coming through the private front door you are met with a grand entrance hallway which leads to the open plan kitchen/ reception room with double height ceilings. Both bedrooms are doubles and the property is being offered chain free.

With Caledonian Road tube station (Piccadilly line) just across the road this property is ideally located for transport links to Kings Cross, the West End and the City. Paradise Park, Caledonian Park and Market Road Gardens are all within easy reach for green space.

Features

- Victorian Pub Conversion
- Private Entrance
- Chain Free
- Double Height Ceilings
- Open Plan Living

Caledonian Road,
London, N7



Total area (approx.): 93.6 sq. m (1,007.5 sq. ft)
(Excluding Void)