



## City Road, EC1V

£1,250,000

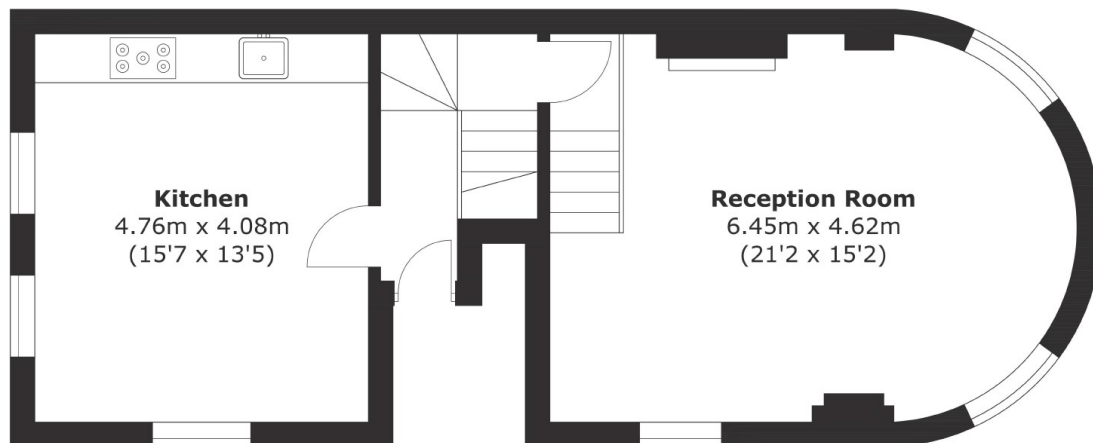
The delightful family home offers a large, well designed kitchen with plenty of room for dining and entertaining. A sizable living space with big windows making this space bright and airy. The apartment has three bedrooms, two bathrooms and ample storage space as well as a generous private patio and separate garden.

The property is ideally located within the heart of Angel being less than a 5 minute walk to Angel Underground (Northern Line) as well as being very close to the many amenities that Islington, Clerkenwell & Kings Cross have to offer.

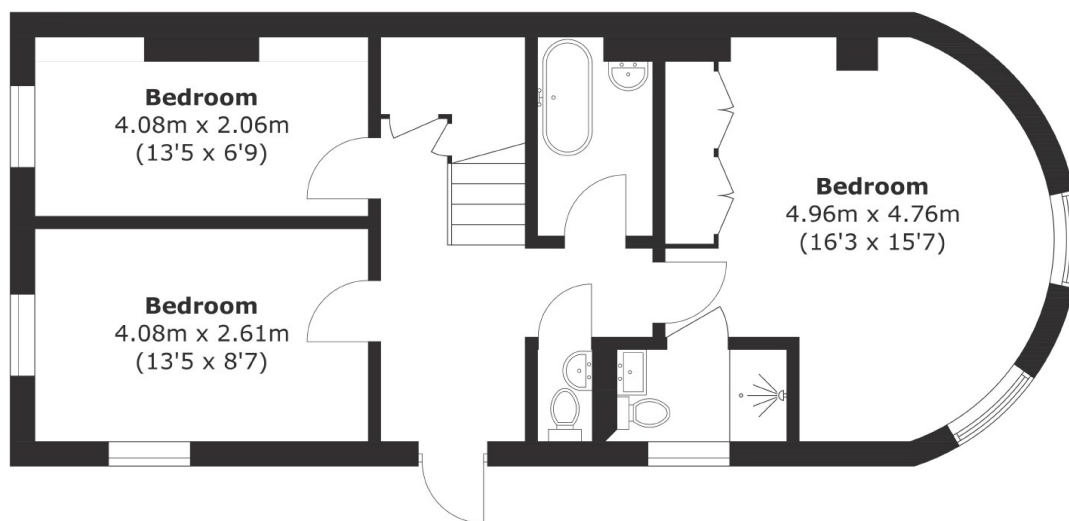
### Features

- Share of Freehold
- Three Bedrooms
- Split Level
- Private Patio
- Private Garden
- 13ft Ceilings

# City Road, London, EC1V



**Ground Floor**



**Lower Ground Floor**

Total area (approx.): 113.3 sq. m (1,219.5 sq. ft)