



Holloway Road, N7

£525,000

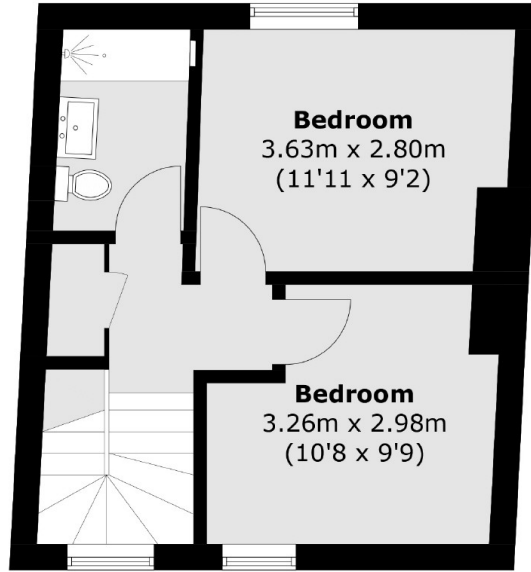
A recently renovated home split across the top two floors. The kitchen/reception room is open plan and features modern shaker style units and a hardwood worktop as well as integrated appliances. The top floor includes two bedrooms and modern bathroom with walk in shower. Being offered with a share of the freehold.

Ideally located between Holloway Road (Piccadilly line) and Highbury and Islington (Victoria and Overground) stations, this flat is perfectly located for transport links. Paradise Park and Highbury Fields are close by for green space, and there are numerous restaurants, bars and café's along both Holloway Road and Upper Street to choose from.

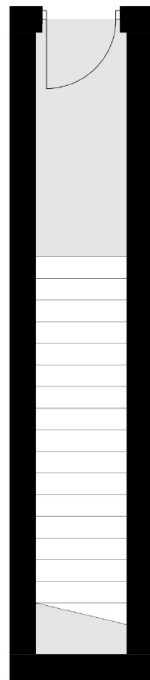
Features

- Top Floors
- Private Entrance
- Two Bedrooms
- Recently Renovated
- Chain Free
- Share of Freehold

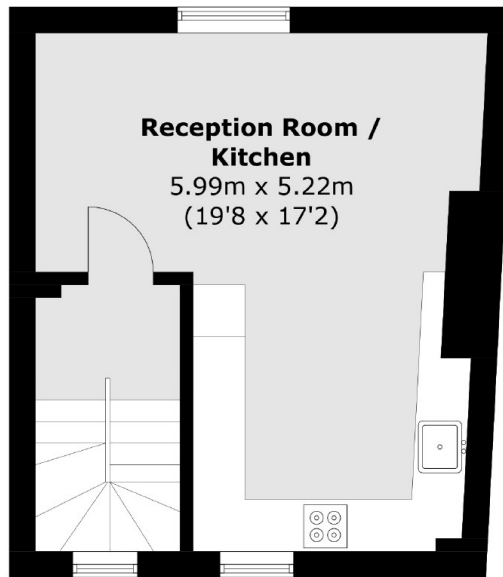
Holloway Road,
London, N7



Second Floor



Ground Floor



First Floor

Total area (approx.): 69.0 sq. m (742.7 sq. ft)