

Copenhagen Street, N1 £450,000

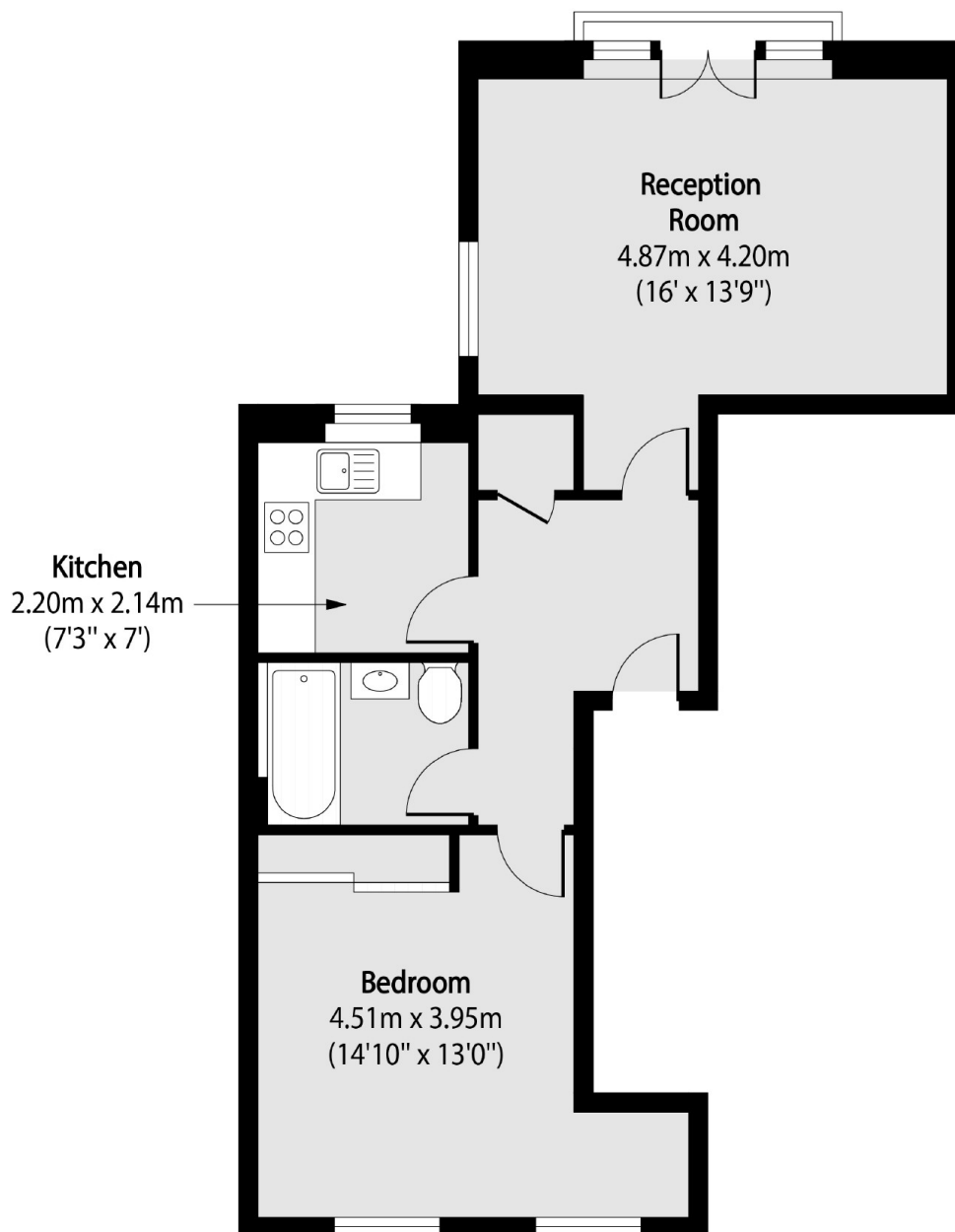
The property is in a small development of only six flats. The reception room benefits from south facing French Doors bathing the room in natural light and offering views over London. There is also a bathroom and separate kitchen while the bedroom comes with double fitted wardrobes and a working area.

The Rambler Building is located on Copenhagen Street, nearest tube stations being Kings Cross (various lines) & Angel (Northern line) and close to local bus services, shops, Kings Cross rail stations, St Pancras Eurostar services, the Regents canal, Granary Square & the shops and restaurants of Coal Drops Yard.

Features

- Chain Free
- Juliette Balcony
- Pub Conversion
- South Facing
- Bike Storage

Copenhagen Street, London, N1



Total area (approx): 49.27 sq m (530 sq. ft)