

Copenhagen Street, N1 £500,000

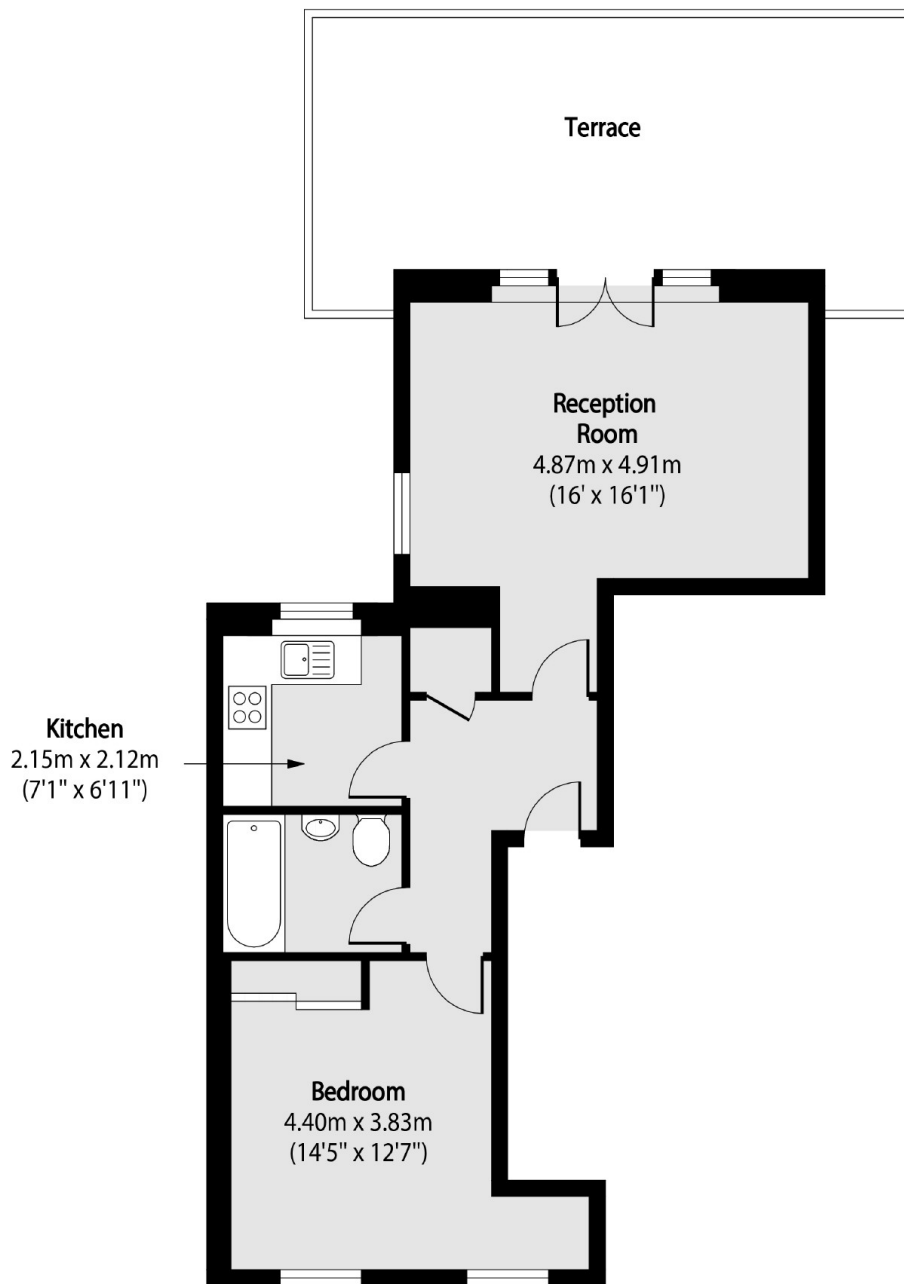
The property is in a small development of only six flats. It benefits from a delightful south facing terrace which is off the reception room and offers views over London. The terrace is large enough to accommodate a dining table and six chairs as well as sun loungers. The reception room benefits from plenty of natural light from the French doors onto the terrace.

The Rambler Building is located on Copenhagen Street, nearest tube stations being Kings Cross (various lines) & Angel (Northern line) and close to local bus services, shops, Kings Cross rail stations, St Pancras Eurostar services, the Regents canal, Granary Square & the shops and restaurants of Coal Drops Yard.

Features

- Chain Free
- Private Terrace
- Pub Conversion
- South Facing
- Bike Storage

Copenhagen Street, London, N1



Total area (approx): 48.38 sq m (521 sq. ft)

Terrace total area (approx): 23.63 sq m (254 sq. ft)