



Highbury Stadium Square, N5

£427 Per week

A spacious one bedroom apartment set within the Highbury Stadium Square development with a concierge and lift access. It has an open plan kitchen and living room, wooden flooring and stunning views over North London.

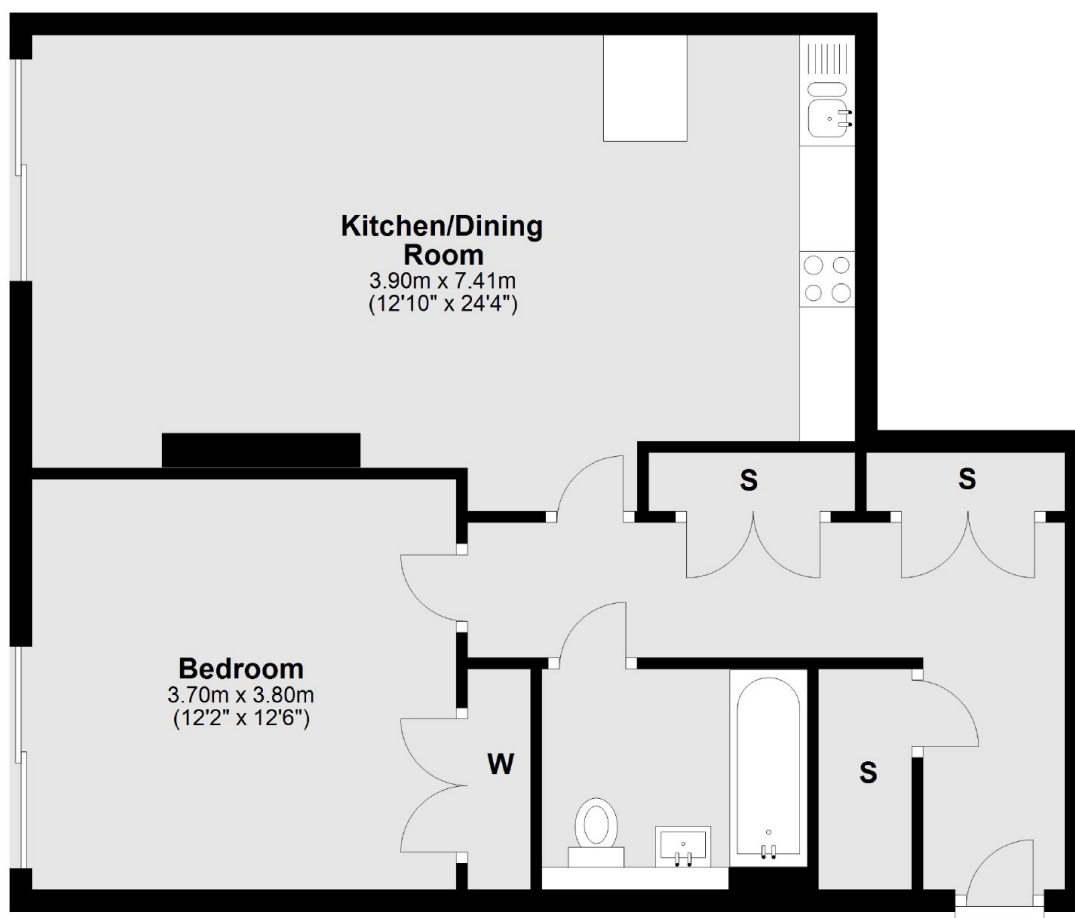
Highbury Stadium Square is under half a mile from Arsenal tube station (Piccadilly line) and Drayton Park Station connecting to the City. It is perfectly located for the restaurants and independent cafes and shops of Highbury Barn and Highbury Park.

Features

- One Bedroom
- Great Storage Space
- Communal Gardens
- 24 Hour Concierge
- Stunning Views
- Open Plan Living

Highbury Stadium Square, London, N5

Sixth Floor



Total area: approx. 64.2 sq. metres (691.4 sq. feet)