

Islay Walk, N1

£640,000

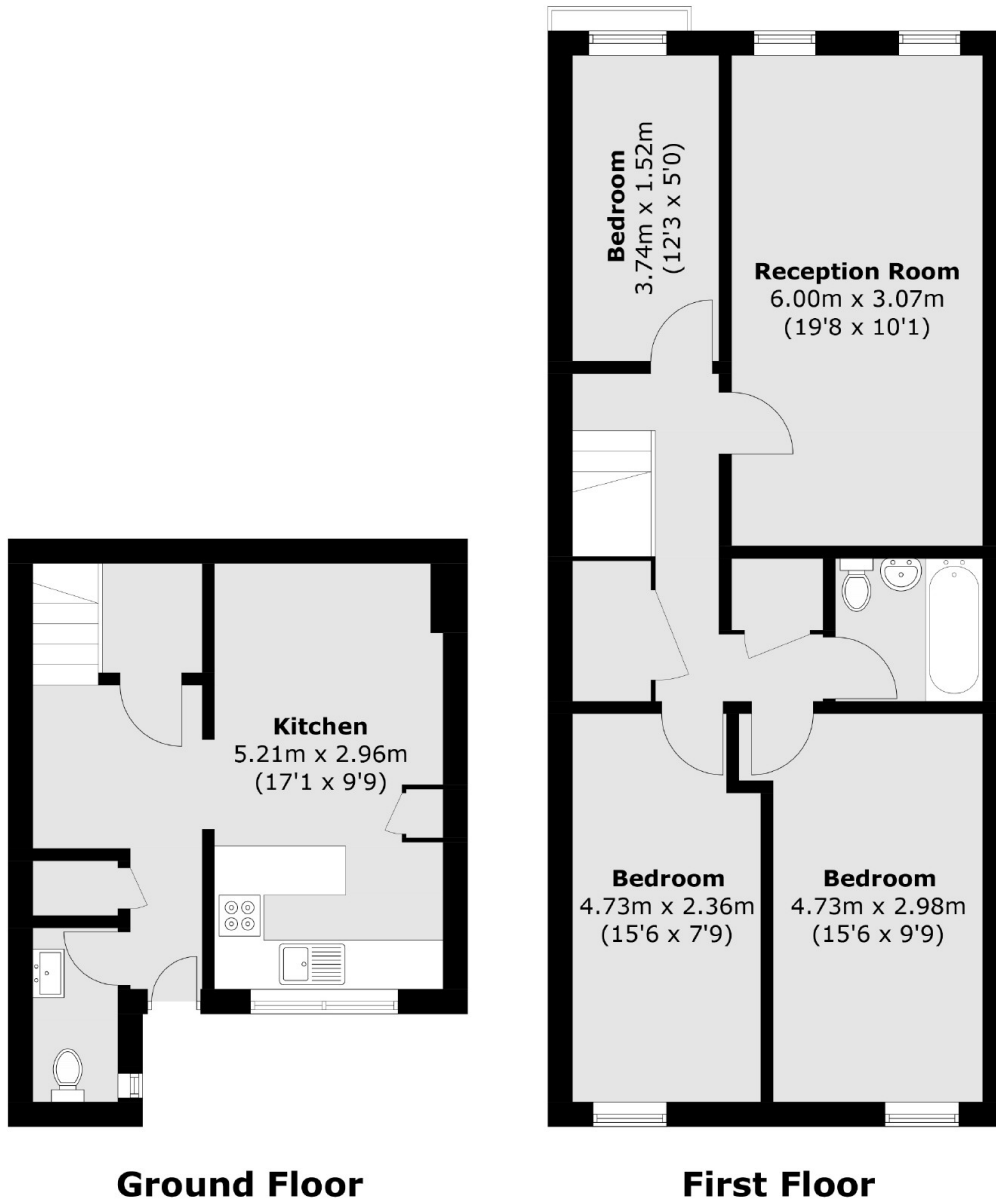
A three bedroom split level maisonette overlooking the stunning New River Walk. This family home has a large private garden, private terrace and has huge potential to modernise and add value.

Located moments from a wealth of shops and amenities on Essex Road and Upper Street. Transport can be found at Canonbury station (London Overground), Highbury & Islington station (National Rail & Victoria Line), Essex Road station, with trains to the City and of course Angel Underground (Northern Line) as well as a range of buses on Essex Road giving easy access to the City and West End.

Features

- Three Bedrooms
- Private Garden
- Private Entrance
- Chain Free
- Split Level
- Separate Toilet

Islay Walk, London, N1



Total area (approx.): 91.7 sq. m (987.1 sq. ft)