

Sotheby Road
Highbury, N5

Dexters



About the property

Set within one of Highbury's most prestigious conservation areas, this impressive late Victorian house is arranged over four storeys.

The home has been thoughtfully designed throughout, creating a space which is attractive and practical. The versatile layout provides four or five bedrooms and the period features offer all of the charm you would expect from a house of this era.

Sotheby Road is in the heart of Highbury and is ideally located for local cafes, green spaces and transport links. Highbury Barn is moments away with boutique shops, delicatessens and eateries.

There are numerous stations within easy reach, including Arsenal (Piccadilly line), Highbury & Islington (National Rail and Victoria line) and Canonbury (London Overground), as well as several bus routes along Highbury Park.

Key features

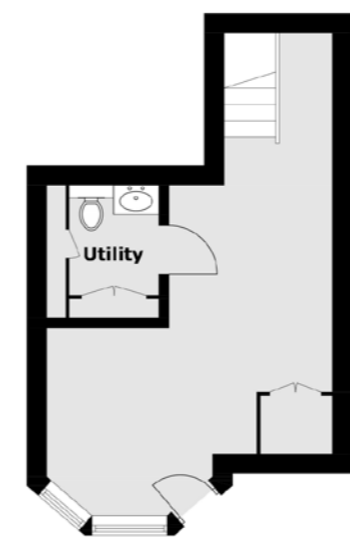
- Victorian Home
- Period Features
- Solid Oak Flooring
- Designer Kitchen From Funktional
- Four/Five Bedrooms
- Low Maintenance Garden



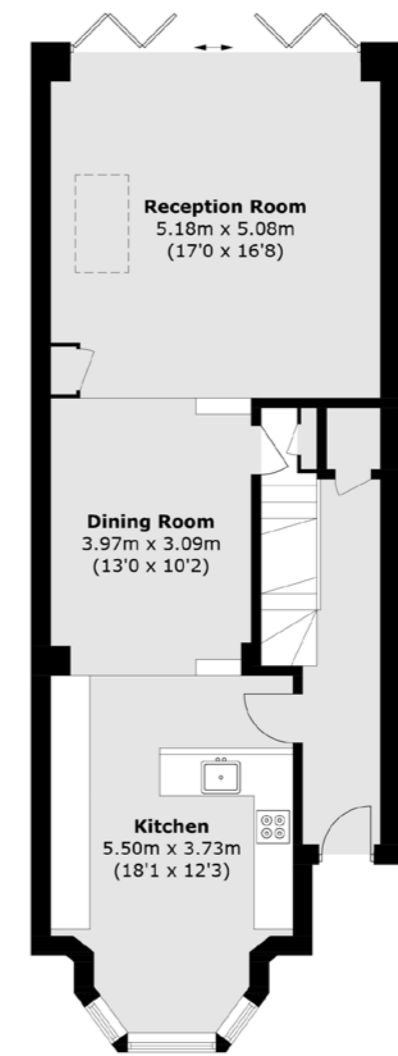




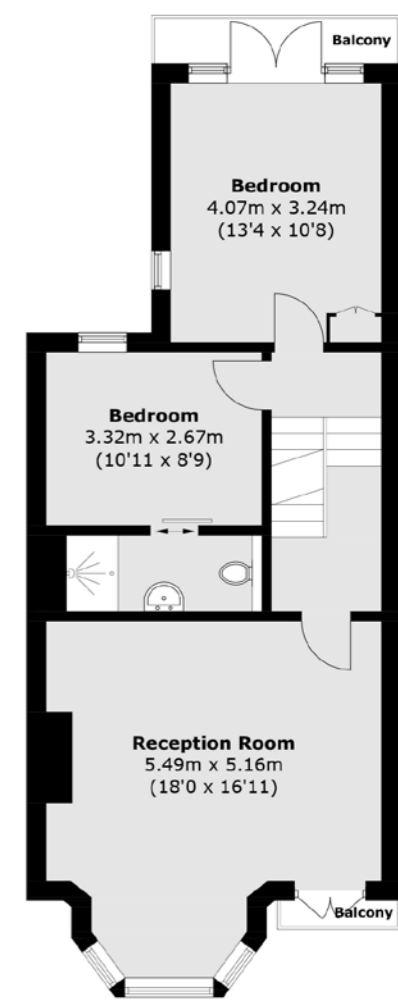
Second Floor



Basement



Ground Floor



First Floor



TOTAL APPROX. FLOOR AREA 2,273.3 SQ. FT (211.2 SQ. M)
BALCONY: 35.5 SQ. FT (3.3 SQ. M)

Energy Rating: TBC. We aim to make our particulars both accurate and reliable. However they are not guaranteed; nor do they form part of an offer or contract. If you require clarification on any points then please contact us, especially if you're traveling some distance to view. Please note that appliances and heating systems have not been tested and therefore no warranties can be given as to their good working order.



Dexters Islington
76 Upper Street,
London, N1 0NU
020 7483 6373

Dexters