



Popham Road, N1

£415,000

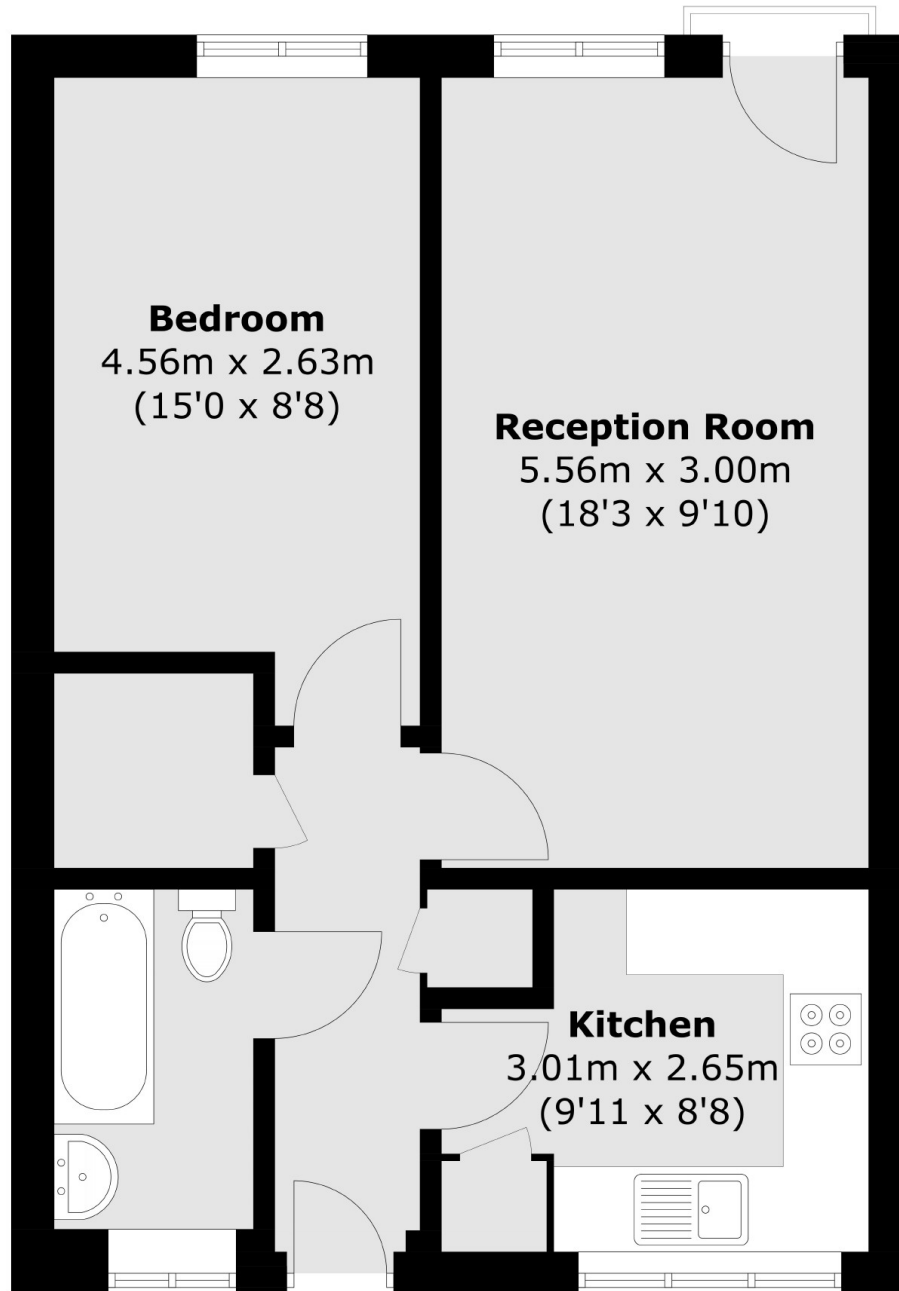
A spacious one bedroom apartment situated on the top floor of this conveniently located block. This property benefits from large South facing windows, a Juliette balcony and wooden floors throughout.

Popham Road is located moments from all the shops, bars and restaurants of Upper Street. Essex Road station is on the doorstep plus it is under a mile to both Canonbury and Highbury & Islington Stations. Angel station is also less than 0.8 miles away.

Features

- One Bedroom
- One Bathroom
- Wooden Floors
- Double Glazed Windows
- Juliette Balcony

Popham Road, London, N1



Total area (approx.): 47.2 sq. m (508.0 sq. ft)