



Liverpool Road, N1

£525,000

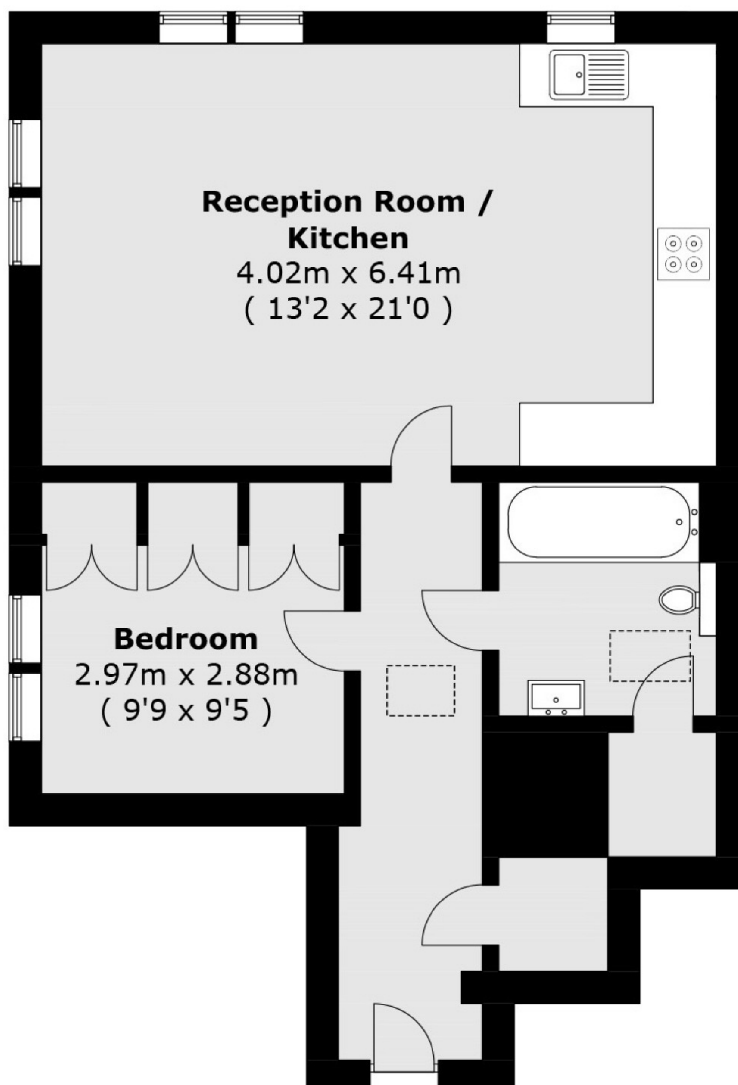
A well presented one bedroom flat on the second floor of a modern development in Islington. The open plan kitchen/reception room has dual aspect windows allowing for plenty of natural light and is a great space to entertain, there is also ample storage throughout.

Located on Liverpool Road, this property is within quarter of a mile of Highbury and Islington station (Victoria line and Overground) and within easy reach of the many shops, bars and restaurants that Upper Street has to offer.

Features

- One Bedroom
- Second Floor
- Chain Free
- Open Plan
- Close to Transport
- Over 550sqft

Liverpool Road, London, N1



Total area (approx.): 51.8 sq. m (557.5 sq. ft)