



## Beresford Terrace, N5

£2,500,000

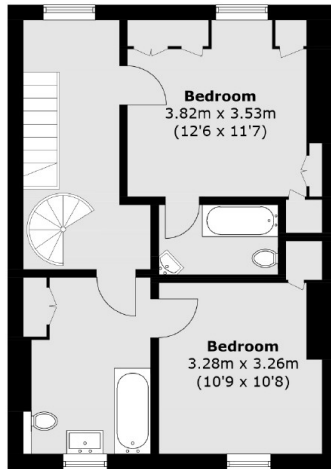
A six bedroom Grade II listed Victorian family home set in an impressive terrace of houses in the heart of Canonbury. This property encompasses over 2500 square feet of living space and has a plethora of original period features as well as a circa 80 foot garden.

Access to the London Overground can be found at Canonbury Station (0.1 miles) whilst the Victoria Line and National Rail are available at Highbury & Islington Station (0.7 miles). The large green space of Highbury Fields, the scenic pathways of the New River Walk and trendy eateries of both Newington Green and Upper Street are within easy reach.

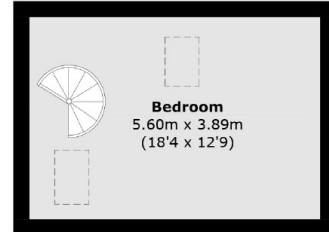
### Features

- Six Bedrooms
- Circa 80 Foot Garden
- Grade II Listed
- 1850s Victorian House
- Three Bathrooms
- Separate WC
- Original Period Features

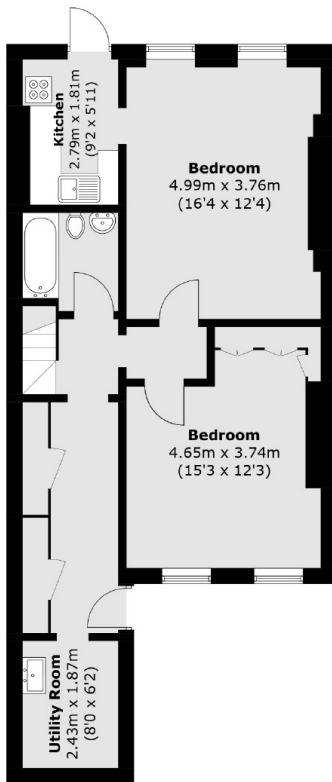
# Beresford Terrace, London, N5



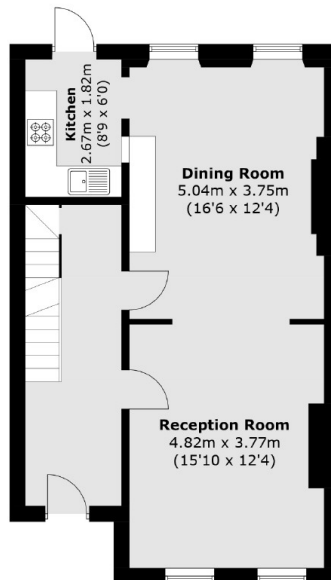
**Second Floor**



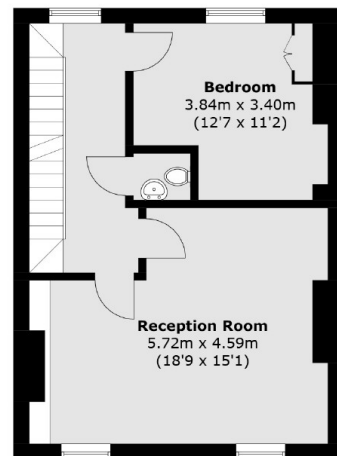
**Third Floor**



**Lower Ground Floor**



**Ground Floor**



**First Floor**

Total area (approx.): 233.7 sq. m (2,515.5 sq. ft)