

Copenhagen Street, N1 £425,000

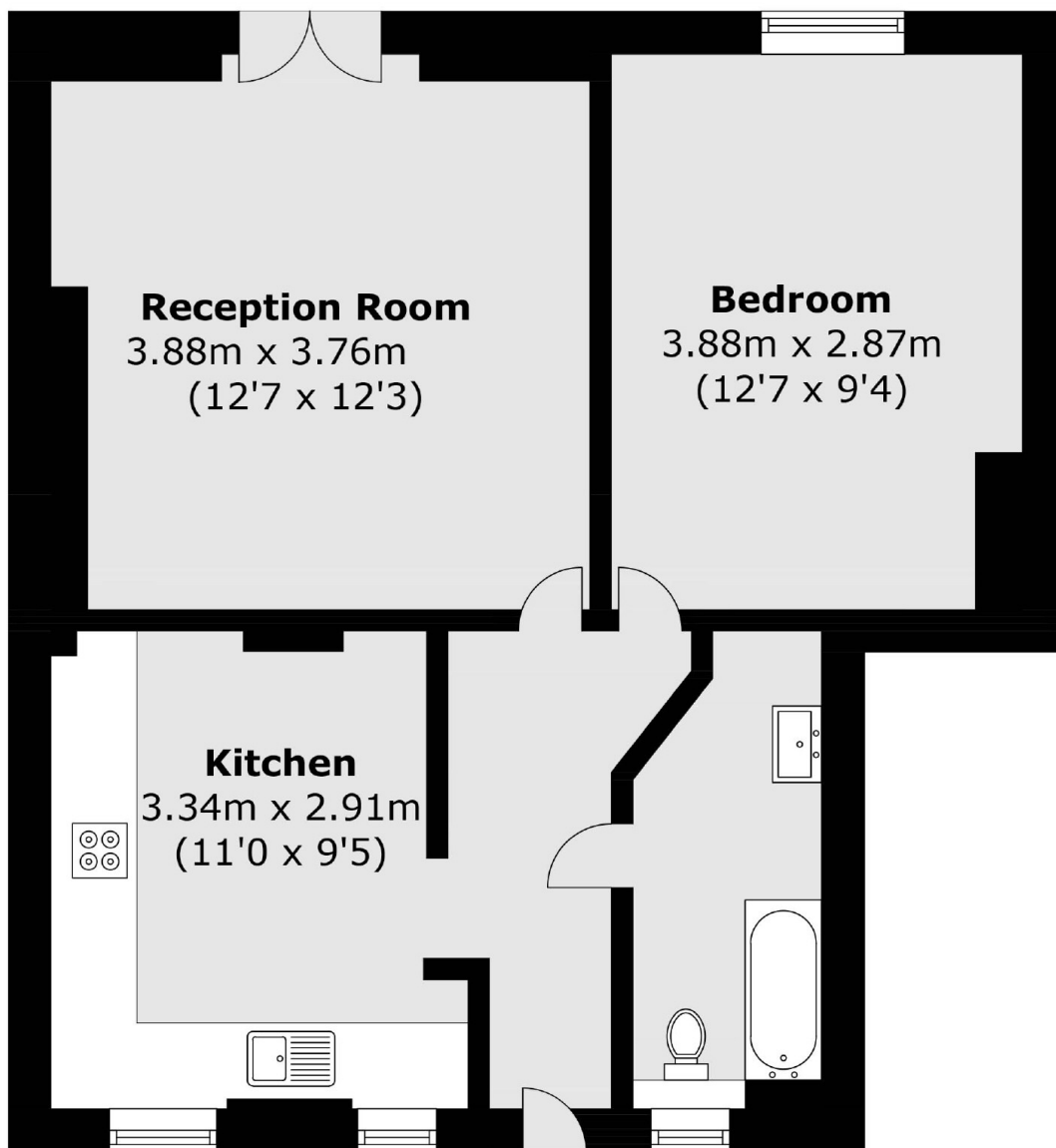
A one bedroom flat with a private outside space in Barnsbury, Islington. Boasting close to 500sqft of living space this well proportioned flat has a good sized reception that leads directly out to a garden, as well as a separate kitchen and fitted storage cupboards.

Ideally located just south of Barnard Park in the heart of Barnsbury, this home is ideally located for green space, transport links and shops/eateries alike. Angel station (Northern line) is around a half mile away and the boutique shops, bars and restaurants of Upper Street are all within easy reach.

Features

- One Bedroom
- Chain Free
- Private Garden
- Great Location

Copenhagen Street, London, N1



Total area (approx.): 45.8 sq. m (492.9 sq. f)