



Whitmore Road, N1

£925,000

A freehold three bedroom terrace home. This beautiful house has an open plan dual aspect living / kitchen area with ample dining space and large sliding doors onto a private decked garden.

All of the bars, restaurants and boutiques of both Shoreditch and Islington are also within easy reach. For rail links you have Haggerston (Overground) and Old Street (Northern Line) and bus links taking you in to The City and West End

Features

- Freehold
- Three Bedrooms
- Modern Kitchen
- Chain Free
- Private Garden



Whitmore Road, N1

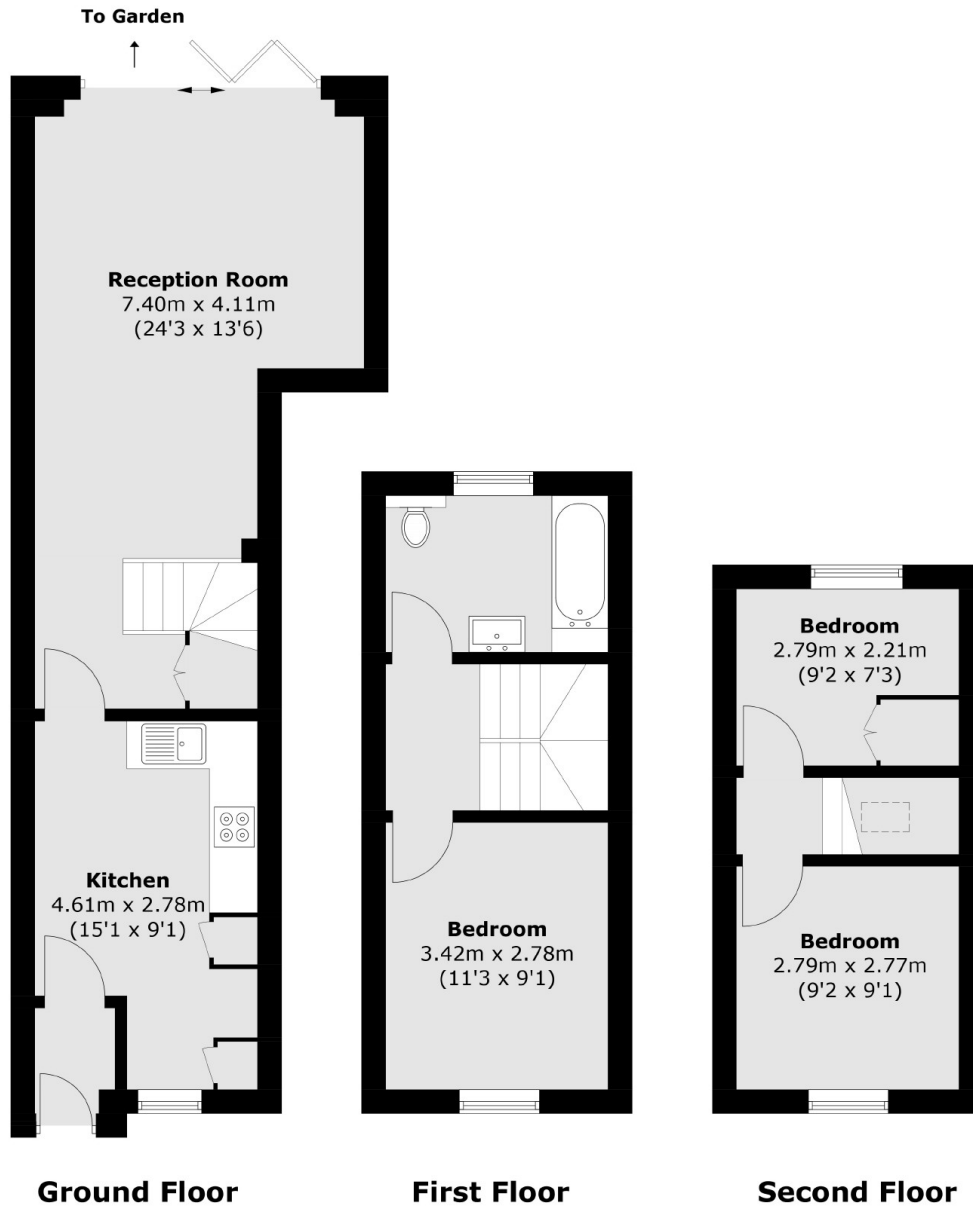
As you enter the property on the ground floor you will find the modern kitchen space which is semi open plan and only divided nicely from the dining and lounge by the staircase. The dining and reception space lead nicely straight out to the west facing decked garden.

On the first floor you have the principle bedroom and family bathroom with a guest double room and a study on the second floor.

Just below the bridge on the towpath are ever expanding options for eating and drinking such as The Barge House and the Towpath cafe.



Whitmore Road, London, N1



Total area (approx.): 77.7 sq. m (836.2 sq. ft)