



Sutton Street, N7

£525,000

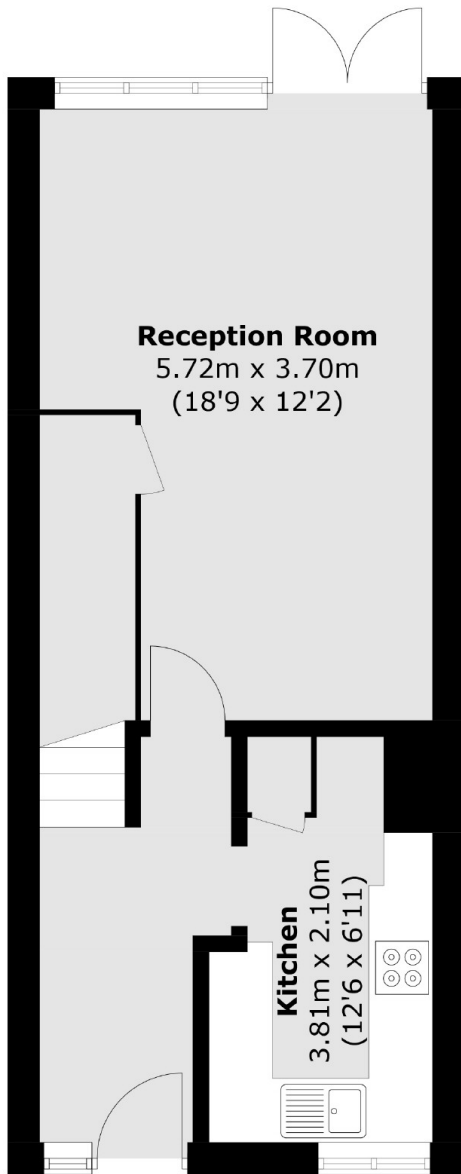
A two bedroom, split level maisonette with private South facing garden. Offering circa 820sqft, this home has a generously proportioned living/dining room, a separate kitchen and is being offered chain free.

For transport Caledonian Road Underground (Picadilly Line) is around a quarter mile away and Caledonian Road and Barnsbury Overground station is around a quarter mile. These stations provide direct access to Kings Cross and Granary Square.

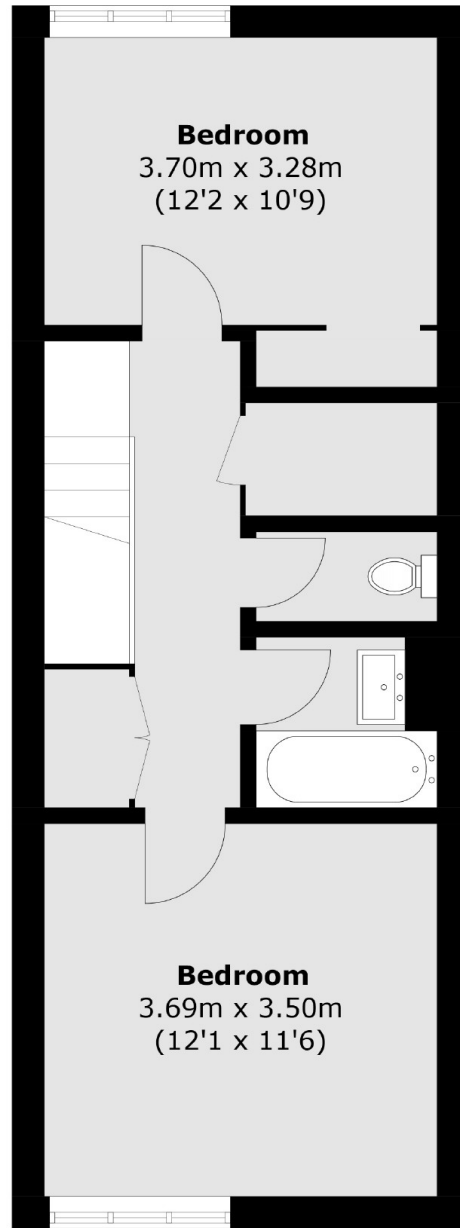
Features

- Two Bedrooms
- South Facing Garden
- Chain Free
- Split Level
- 820sqft
- Separate Kitchen

Sutton Street,
London, N7



Ground Floor



First Floor

Total area (approx.): 76.2 sq. m (820.2 sq. ft)