



Drayton Park, N5

£445,000

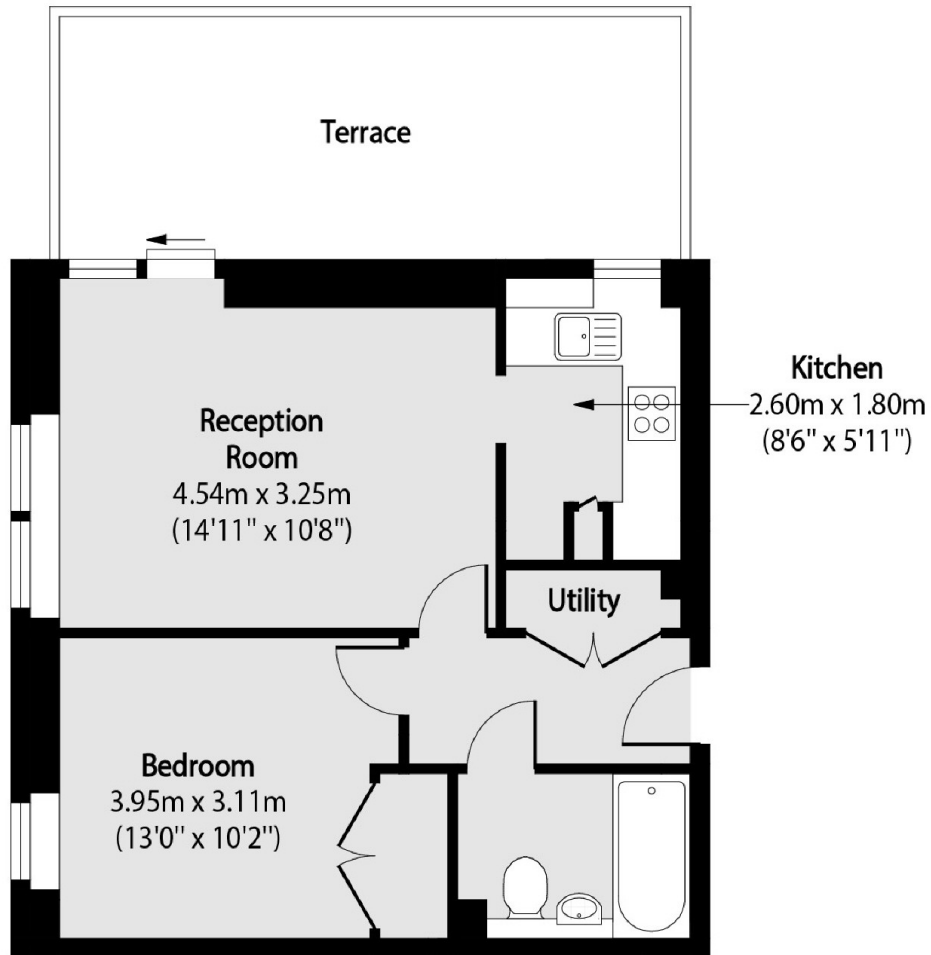
A one bedroom apartment with a large private terrace with courtyard views located in Drayton Park. This property benefits from an open plan living and kitchen area and modern finishes.

A short walk from Highbury and Islington tube station (Victoria Line) which is one stop away from Kings Cross and direct into the city.

Features

- One Double Bedroom
- One Bathroom
- Private Terrace
- Open Plan Living & Kitchen Area
- Courtyard Views
- Chain Free

Drayton Park, London, N5



Total area (approx): 43.77 sq m (471 sq. ft)

Terrace area (approx): 16.00 sq m (172 sq. ft)