



## Falcon Court, N1

£600,000

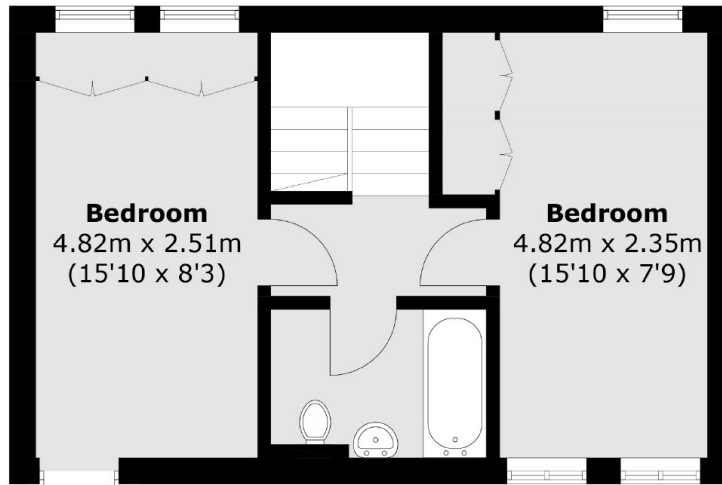
A spacious split-level two bedroom flat nestled behind City Road near the canal. This property benefits from dual aspect throughout and a private south facing terrace.

Falcon Court boasts a prime location, between Upper Street and Old Street. Enjoy both the boutique shops and high street chains at Angel, as well as the vibrant bars and restaurants of Shoreditch and Hoxton.

### Features

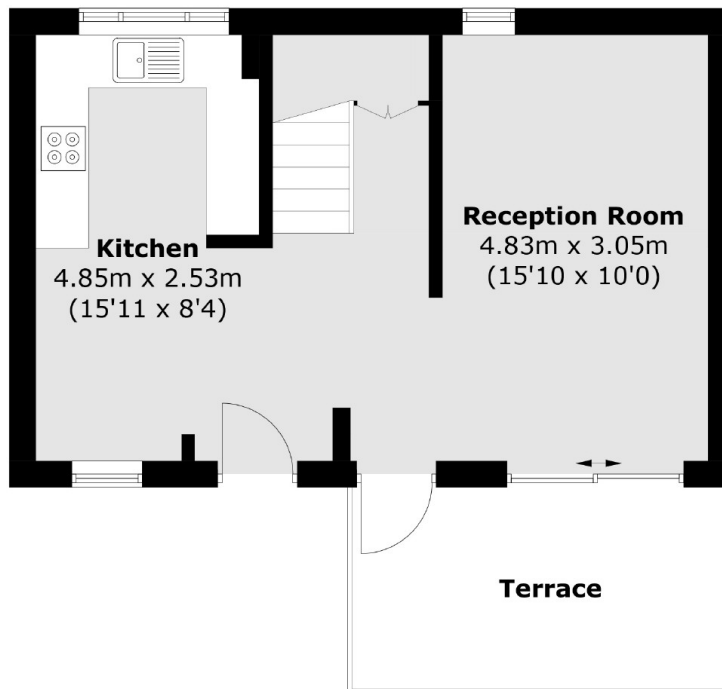
- Split Level
- Two Bedroom
- South-Facing Terrace
- Private Entrance
- Long Lease
- Chain Free

# Falcon Court, London, N1



Fire Exit

## Second Floor



## First Floor

Total area (approx.): 74.1 sq. m (797.6 sq. ft)

Terrace (approx.): 9.8 sq. m (105.4 sq. ft)

# Dexters

Islington  
76 Upper Street  
London  
N1 0NU

Sales  
020 7483 6373

Energy Rating: C. We aim to make our particulars both accurate and reliable. However they are not guaranteed; nor do they form part of an offer or contract. If you require clarification on any points then please contact us, especially if you're traveling some distance to view. Please note that appliances and heating systems have not been tested and therefore no warranties can be given as to their good working order.

 **RICS** Regulated  
Estate Agent  
and Letting Agent

dexters.co.uk