



## Riversdale Road, N5

£595,000

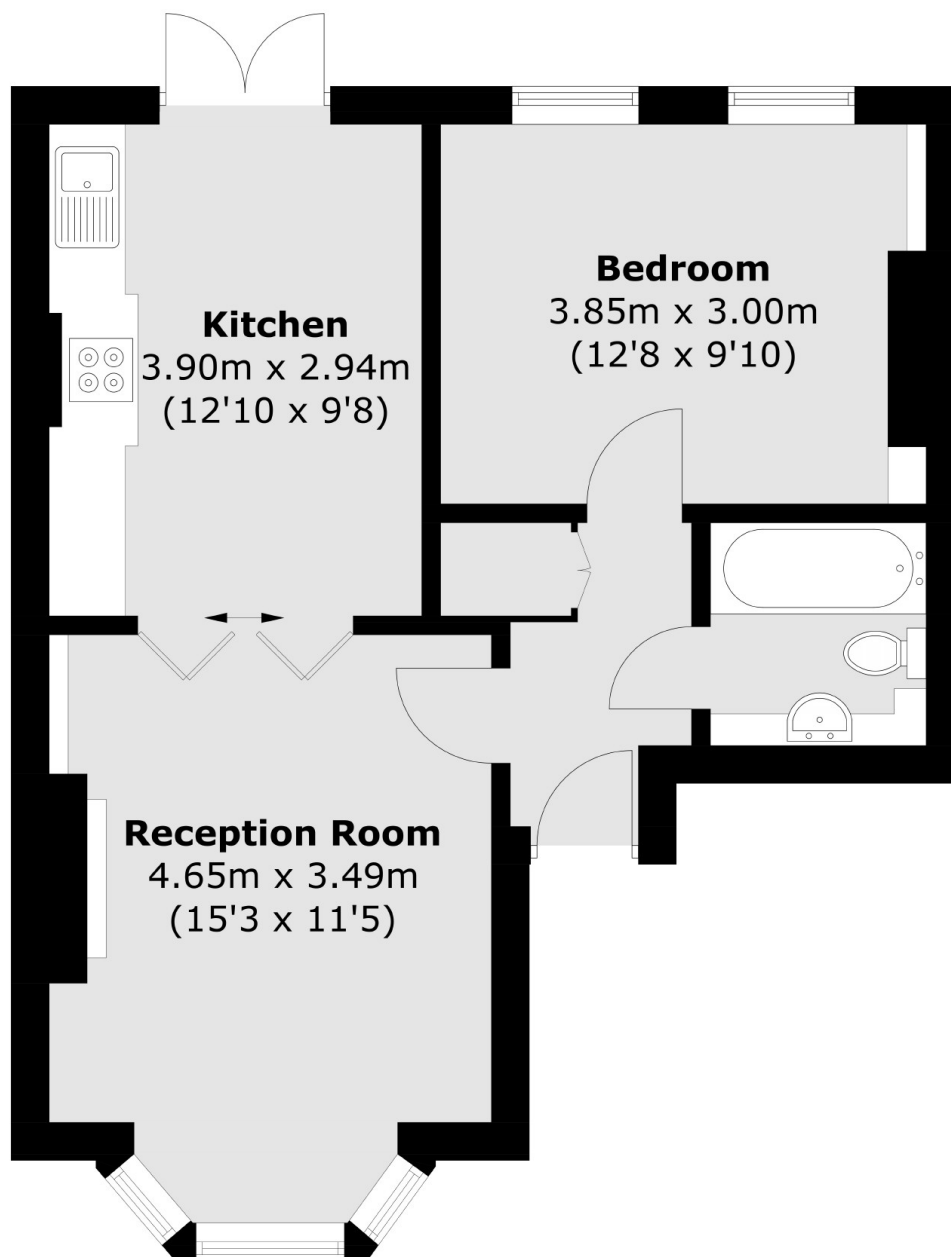
A beautifully presented one bedroom home, set within a Victorian conversion in the heart of Highbury. The double reception room encompasses both the living space and the eat-in kitchen, which leads directly out to an immaculately kept south facing garden.

Riversdale Road is a tree-lined street, ideally situated for transport links and green space alike. Zone 2, Arsenal (Piccadilly Line) and Finsbury Park (Piccadilly, Victoria, Great Northern and Thameslink Lines) are around half a mile away and Clissold Park is just moments away.

### Features

- One Bedroom
- South Facing Communal Garden
- Double Kitchen/Reception
- Victorian/Period Features
- High Ceilings
- Share of Freehold
- Tree-Lined Street

# Riversdale Road, London, N5



Total area (approx.): 46.9 sq. m (504.8 sq. ft)